

TM 9-4110-256-24P

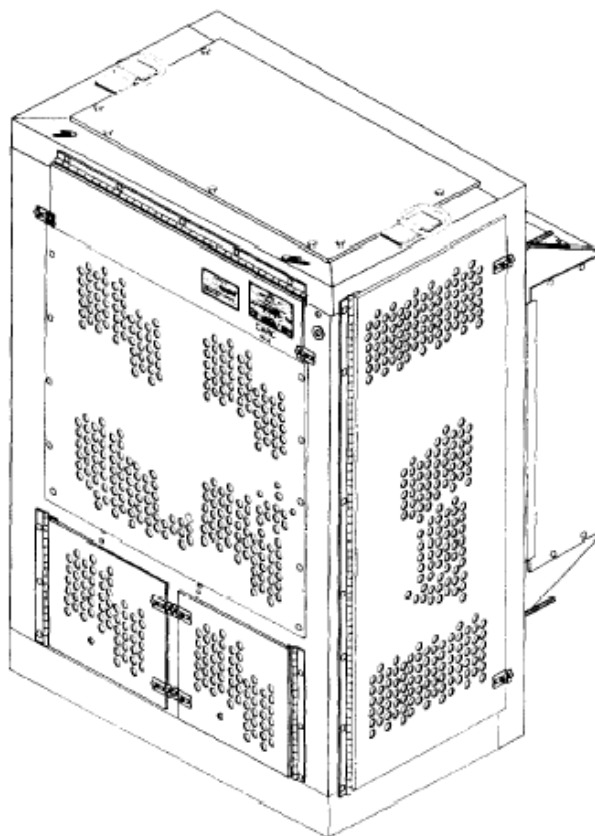
TECHNICAL MANUAL

UNIT, DIRECT SUPPORT, AND GENERAL SUPPORT MAINTENANCE
REPAIR PARTS AND SPECIAL TOOLS LIST

FOR

REFRIGERATION UNIT, MECHANICAL,
10K BTU, ELECTRIC
MODEL F10000RE

NSN 4110-01-389-9182



DISTRIBUTION STATEMENT A: Approved for public release; distribution is unlimited.

HEADQUARTERS, DEPARTMENT OF THE ARMY

31 AUGUST 2003

CHANGE
NO. 1

HEADQUARTERS
DEPARTMENT OF THE ARMY
WASHINGTON, D.C., 31 July 2005

TECHNICAL MANUAL

UNIT, DIRECT SUPPORT, AND GENERAL SUPPORT MAINTENANCE
REPAIR PARTS AND SPECIAL TOOLS LIST
FOR THE
REFRIGERATION UNIT, MECHANICAL, 10K BTU, ELECTRICAL
MODEL F10000RE NSN 4110-01-389-9182

DISTRIBUTION STATEMENT A: Approved for public release; distribution is unlimited.

TM 9-4110-256-24P, 31 August 2003, is updated as follows:

1. File this sheet in front of the manual for reference.
2. This change is a result of corrected National Stock Numbers NSNs, CAGECs, and part numbers.
3. A vertical bar in the outer margin of the page indicates a new or updated page.
4. Remove old pages and insert new pages as indicated below:

<u>Remove pages</u>	<u>Insert pages</u>
A/(B blank)	A/(B blank)
Sample 2028	Sample 2028
2028	2028
2028	2028
	2028

5. Remove the following work packages.

<u>Work Package Number</u>	<u>Work Package Number</u>
WP 0002 00	WP 0007 00
WP 0003 00	

6. Insert the following new work packages.

<u>Work Package Number</u>	<u>Work Package Number</u>
WP 0002 00	WP 0007 00
WP 0003 00	


ARMY TM 9-4110-256-24P

Change 1

By Order of the Secretary of the Army:

PETER J. SCHOOMAKER
General, United States Army
Chief of Staff

Official:


SANDRA R. RILEY
*Administrative Assistant to the
Secretary of the Army*
0516405

Distribution: To be distributed in accordance with initial distribution number (IDN) 256777 requirements for TM 9-4110-256-24P.

INSERT LATEST UPDATED PAGES / WORK PACKAGES DESTROY SUPERSEDED DATA

LIST OF EFFECTIVE PAGES

Note: The portion of text affected by the update is indicated by a vertical line in the outer margins of the page. Updates to illustrations are indicated by miniature pointing hands. Updates to wiring diagrams are indicated by shaded areas.

Dates of issue for original and updated pages / work packages are:

Original .. 0 .. 31 August 03

Change .. 1 .. 31 July 05

TOTAL NUMBER OF PAGES FOR FRONT AND REAR MATTER IS 14 AND TOTAL NUMBER OF WORK PACKAGES IS 16 CONSISTING OF THE FOLLOWING:

Page / WP No.	* Change No.	Page / WP No.	* Change No.
A-B	1		
i-ii	0		
WP 0001 00	0		
WP 0002 00-0003 00	1		
WP 0004 00-0006 00	0		
WP 0007 00	1		
WP 0008 00-0016 00	0		

*Zero in this column indicates an original page or work package.

TECHNICAL MANUAL

**UNIT, DIRECT SUPPORT, AND GENERAL SUPPORT
MAINTENANCE REPAIR PARTS AND SPECIAL TOOLS LIST**

For

**REFRIGERATION UNIT, MECHANICAL,
10K BTU, ELECTRIC
MODEL F1000RE**

NSN 4110-01-389-9182

Current as of: 30 September 2002

REPORTING ERRORS AND RECOMMENDING IMPROVEMENTS

You can help improve this manual. If you find any mistakes or if you know of a way to improve these procedures, please let us know. Mail your letter or DA Form 2028 (Recommended Changes to Publications and Blank Forms), or DA Form 2028-2 located in the back of this manual directly to: Commander, U.S. Army Soldier and Biological Chemical Command, ATTN: AMSSB-RIM-L (N), Kansas Street, Natick, MA 01760-5052. You may also submit your recommended changes by email directly to amssbriml@natick.army.mil. A reply will be furnished directly to you. Instructions for sending an electronic 2028 may be found at the back of this manual immediately preceding the hard copy 2028.

DISTRIBUTION STATEMENT A: Approved for public release; distribution is unlimited.

TABLE OF CONTENTS

		<u>WP Sequence No.</u>
LIST OF EFFECTIVE PAGES		A
INTRODUCTION		0001 00
Group	01 Panels and Guards	
	Panels and Guards	0002 00
Group	02 Electrical and Control	
	Control Box	0003 00
	Control Box Wires and Cables	0004 00
	Control Box Assembly	0005 00
	Switches and Electrical Enclosure Assembly	0006 00
Group	03 Power Transmission and Air Handling	
	Power Transmission and Air Handling	0007 00

TABLE OF CONTENTS - Continued

		<u>WP Sequence No.</u>	
Group	04	Refrigeration System	
		Refrigerant Piping, Condenser Section	0008 00
		Refrigerant Piping, Evaporator Section	0009 00
		Pressure Switches	0010 00
		Compressor	0011 00
Group	05	Housing	
		Heat Shield Frame.....	0012 00
Group	06	Bulk Material	
		Bulk.....	0013 00
SPECIAL TOOLS LIST (Not Applicable)			0014 00
National Stock Number Index			0015 00
Part Number Index			0016 00

**REFRIGERATION UNIT, MECHANICAL, 10K BTU, ELECTRIC
REPAIR PARTS AND SPECIAL TOOLS LIST (RPSTL) INTRODUCTION**

INTRODUCTION

SCOPE

This RPSTL lists and authorizes spares and repair parts; special tools; special test, measurement, and diagnostic equipment (TMDE); and other special support equipment required for performance of unit, direct support, and general support maintenance of the Refrigeration Unit, Mechanical, 10K BTU, Electric. It authorizes the requisitioning, issue, and disposition of spares, repair parts, and special tools as indicated by the source, maintenance, and recoverability (SMR) codes.

GENERAL

In addition to the Introduction work package, this RPSTL is divided into the following work packages.

1. Repair Parts List Work Packages. Work packages containing lists of spares and repair parts authorized by this RPSTL for use in the performance of maintenance. These work packages also include parts which must be removed for replacement of the authorized parts. Parts lists are composed of functional groups in ascending alphanumeric sequence, with the parts in each group listed in ascending figure and item number sequence. Sending units, brackets, filters, and bolts are listed with the component they mount on. Bulk materials are listed by item name in FIG. BULK at the end of the work packages. Repair parts kits are listed separately in their own functional group and work package. Repair parts for reparable special tools are also listed in a separate work package. Items listed are shown on the associated illustrations.

2. Special Tools List Work Packages. Work packages containing lists of special tools, special TMDE, and special support equipment authorized by this RPSTL (as indicated by Basis of Issue (BOI) information in the DESCRIPTION AND USABLE ON CODE (UOQ column). Tools that are components of common tool sets and/or Class VII are not listed.

3. Cross-Reference Indexes Work Packages. There are two cross-reference indexes work packages in this RPSTL: the National Stock Number (NSN) Index workpackage and the Part Number (PIN) Index workpackage. The National Stock Number Index workpackage refers you to the figure and item number. The Part Number Index workpackage refers you to the figure and item number.

EXPLANATION OF COLUMNS IN THE REPAIR PARTS LIST AND SPECIAL TOOLS LIST WORK PACKAGES

ITEM NO. (Column (1)). Indicates the number used to identify items called out in the illustration.

SMR CODE. (Column (2)). The SMR code containing supply/requisitioning information, maintenance level authorization criteria, and disposition instruction, as shown in the following breakout::

<u>Source Code</u>	<u>Maintenance Code</u>	<u>Recoverability Code</u>
<u>XX</u>	<u>XX</u>	<u>X</u>
1st two positions: How to get an item.	3rd position: Who can install, replace, or use the item.	4th position: Who can do complete repair on the item.
		5th position: Who determines disposition action on unserviceable items.

*Complete Repair: Maintenance capacity, capability, and authority to perform all corrective maintenance tasks of the "Repair" function in a use/user environment in order to restore serviceability to a failed item.

Source Code. The source code tells you how you get an item needed for maintenance, repair, or overhaul of an end item/equipment. Explanations of source codes follow:

SOURCE CODE	EXPLANATION
PA	Stock items; use the applicable NSN to requisition/request items with these source codes. They are authorized to the level indicated by the code entered in the 3 rd position of the SMR code.
PB	
PC	
PD	
PE	
PF	
PG	
KD	
KF	
KB	
	NOTE
	Items coded PC are subject to deterioration.
MO – (Made at unit/AVUM Level)	Items with these codes are not to be requisitioned/requested individually. They must be made from bulk material which is identified by the P/N in the DESCRIPTION and USABLE ON CODE (UOC) column and listed in the bulk material group work package of the RPSTL. If the item is authorized to you by the 3 rd position code of the SMR code, but the source code indicates it is made at a higher level, order the item from the higher level of maintenance.
MF – (Made at DS/AVIM Level)	
MH – (Made at GS Level)	
ML – (Made at SRA)	
MD – (Made at Depot)	
AO – (Assembled by unit AVUM Level)	Items with these codes are not to be requested/requisitioned individually. The parts that make up the assembled item must be requisitioned or fabricated and assembled at the level of maintenance indicated by the source code. If the 3 rd position code of the SMR code authorizes you to replace the item, but the source code indicates the item is assembled at a higher level, order the item from the higher level of maintenance.
AF – (Assembled by DS/AVIM Level)	
AH – (Assembled by GS Level)	
AL – (Assembled by SRA)	
AD – (Assembled by Depot)	
XA -	Do not requisition an XA-coded item. Order the next higher assembly. (Refer to the NOTE below.)
XB -	If an item is not available from salvage, order it using the CAGEC and P/N.
SOURCE CODE – continued	EXPLANATION - continued
XC -	Installation drawings, diagrams, instruction sheets, field service drawings; identified by manufacturer's P/N.
XD -	Item is not stocked. Order an XD-coded item through normal supply channels using the CAGEC and P/N given, if no NSN is available.

NOTE Cannibalization or controlled exchange, when authorized, may be used as a source of supply for items with the above source codes except for those items source coded "XA" or those aircraft support items restricted by requirements of AR 750- 1.

Maintenance Code. Maintenance codes tell you the level(s) of maintenance authorized to use and repair support items. The maintenance codes are entered in the third and fourth positions of the SMR code as follows:

Third Position. The maintenance code entered in the third position tells you the lowest maintenance level authorized to remove, replace, and use an item. The maintenance code entered in the third position will indicate authorization to the following levels of maintenance:

Maintenance

Code	Application/Explanation
C ---	Crew or operator maintenance done within unit/AVUM maintenance.
O ---	Unit level/AVUM maintenance can remove, replace, and use the item.
F ---	Direct support/AVIM maintenance can remove, replace, and use the item.
H ---	General support maintenance can remove, replace, and use the item.
L ---	Specialized repair activity can remove, replace, and use the item.
D ---	Depot can remove, replace, and use the item.

Fourth Position. The maintenance code entered in the fourth position tells you whether or not the item is to be repaired and identifies the lowest maintenance level with the capability to do complete repair (perform all authorized repair functions).

NOTE

Some limited repair may be done on the item at a lower level of maintenance, if authorized by the Maintenance Allocation Chart (MAC) and SMR codes.

Maintenance

<u>Code</u>	<u>Application/Explanation</u>
O ---	Unit/AVUM is the lowest level that can do complete repair of the item.
F ---	Direct support/AVIM is the lowest level that can do complete repair of the item.
H ---	General support is the lowest level that can do complete repair of the item.
L ---	Specialized repair activity is the lowest level that can do complete repair of the item.
D ---	Depot is the lowest level that can do complete repair of the item.
Z ---	Nonreparable. No repair is authorized.
B ---	No repair is authorized. No parts or special tools are authorized for maintenance of "B" coded item. However, the item may be reconditioned by adjusting, lubricating, etc., at the user level.

Recoverability Code. Recoverability codes are assigned to items to indicate the disposition action on unserviceable items. The recoverability code is shown in the fifth position of the SMR code as follows:

**Recoverability
Code****Application/Explanation**

- | | |
|-------|---|
| Z --- | Nonreparable item. When unserviceable, condemn and dispose of the item at the level of maintenance shown in the third position of the SMR code. |
| O --- | Reparable item. When uneconomically repairable, condemn and dispose of the item at the unit level. |
| F --- | Reparable item. When uneconomically repairable, condemn and dispose of the item at the direct support level. |
| H --- | Reparable item. When uneconomically repairable, condemn and dispose of the item at the general support level. |
| D --- | Reparable item. When beyond lower level repair capability, return to depot. Condemnation and disposal of item are not authorized below depot level. |
| L --- | Reparable item. Condemnation and disposal not authorized below Specialized Repair Activity (SRA). |
| A --- | Item requires special handling or condemnation procedures because of specific reasons (such as precious metal content, high dollar value, critical material, or hazardous material). Refer to appropriate manuals/directives for specific instructions. |

NSN (Column (3)). The NSN for the item is listed in this column.

CAGEC (Column (4)). The Commercial and Government Entity Code (CAGEC) is a five-digit code which is used to identify the manufacturer, distributor, or Government agency/activity that supplies the item.

PART NUMBER (Column (5)). Indicates the primary number used by the manufacturer (individual, company, firm, corporation, or Government activity), which controls the design and characteristics of the item by means of its engineering drawings, specifications, standards, and inspection requirements to identify an item or range of items.

NOTE

When you use an NSN to requisition an item, the item you receive may have a different PIN from the number listed.

DESCRIPTION AND USABLE ON CODE (UOQ (Column (6))). This column includes the following information:

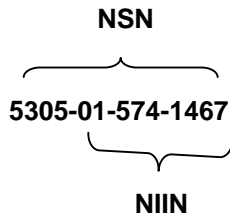
1. The federal item name, and when required, a minimum description to identify the item.
2. P/Ns of bulk materials are referenced in this column in the line entry to be manufactured or fabricated.
3. Hardness Critical Item (HCI). A support item that provides the equipment with special protection from electromagnetic pulse (EMP) damage during a nuclear attack.
4. The statement END OF FIGURE appears just below the last item description in column (6) for a given figure in both the repair parts list and special tools list work packages.

QTY (Column (7)). The QTY (quantity per figure) column indicates the quantity of the item used in the breakout shown on the illustration/figure, which is prepared for a functional group, subfunctional group, or an assembly. A "V" appearing in this column instead of a quantity indicates that the quantity is variable and quantity may change from application to application.

EXPLANATION OF CROSS-REFERENCE INDEXES WORK PACKAGES FORMAT AND COLUMNS

I. National Stock Number (NSN) Index Work Package.

STOCK NUMBER Column. This column lists the NSN in National item identification number (NIIN) sequence. The NIIN consists of the last nine digits of the NSN.



When using this column to locate an item, ignore the first 4 digits of the NSN. However, the complete NSN should be used when ordering items by stock number.

FIG. Column. This column lists the number of the figure where the item is identified/located. The figures are in numerical order in the repair parts list and special tools list work packages.

ITEM Column. The item number identifies the item associated with the figure listed in the adjacent FIG. column. This item is also identified by the NSN listed on the same line.

2. Part Number (P/N) Index Work Package. P/Ns in this index are listed in ascending alphanumeric sequence (vertical arrangement of letter and number combinations which places the first letter or digit of each group in order A through Z, followed by the numbers 0 through 9 and each following letter or digit in like order).

PART NUMBER Column. Indicates the P/N assigned to the item.

FIG. Column. This column lists the number of the figure where the item is identified/located in the repair parts list and special tools list work packages.

ITEM Column. The item number is the number assigned to the item as it appears in the figure referenced in the adjacent figure number column."

SPECIAL INFORMATION

Fabrication Instructions. Bulk materials required to manufacture items are listed in the bulk material functional group of this RPSTL. Part numbers for bulk material are also referenced in the Description Column of the line item entry for the item to be manufactured/fabricated.

Index Numbers. Items which have the word BULK in the figure column will have an index number shown in the item number column. This index number is a cross-reference between the NSN / P/N index work packages and the bulk material list in the repair parts list work package."

Associated Publications. The publication(s) listed below pertains to the (enter item name):

TM 9-4510-207-14

Unit, Direct Support , and General Support
Maintenance Manual for the Refrigeration Unit,
Mechanical, 10K BTU, Electric

HOW TO LOCATE REPAIR PARTS

1. When NSNs or P/Ns Are Not Known.

First. Using the table of contents, determine the assembly group to which the item belongs. This is necessary since figures are prepared for assembly groups and subassembly groups, and lists are divided into the same groups.

Second. Find the figure covering the functional group or the subfunctional group to which the item belongs.

Third. Identify the item on the figure and note the number(s).

Fourth. Look in the repair parts list work packages for the figure and item numbers. The NSNs and part numbers are on the same line as the associated item numbers.

2. When NSN Is Known.

First. If you have the NSN, look in the STOCK NUMBER column of the NSN index work package. The NSN is arranged in NIIN sequence. Note the figure and item number next to the NSN.

Second. Turn to the figure and locate the item number. Verify that the item is the one you are looking for.

3. When P/N Is Known.

First. If you have the P/N and not the NSN, look in the PART NUMBER column of the P/N index work package. Identify the figure and item number.

Second. Look up the item on the figure in the applicable repair parts list work package."

ABBREVIATIONS

All abbreviations contained in this RPSTL are common abbreviations.

UNIT, DIRECT SUPPORT AND GENERAL SUPPORT MAINTENANCE

REFRIGERATION UNIT, MECHANICAL, 10K BTU, ELECTRIC
MODEL F10000RE

REFRIGERATION UNIT, MECHANICAL, 10K BTU ELECTRIC

REPAIR PARTS LIST

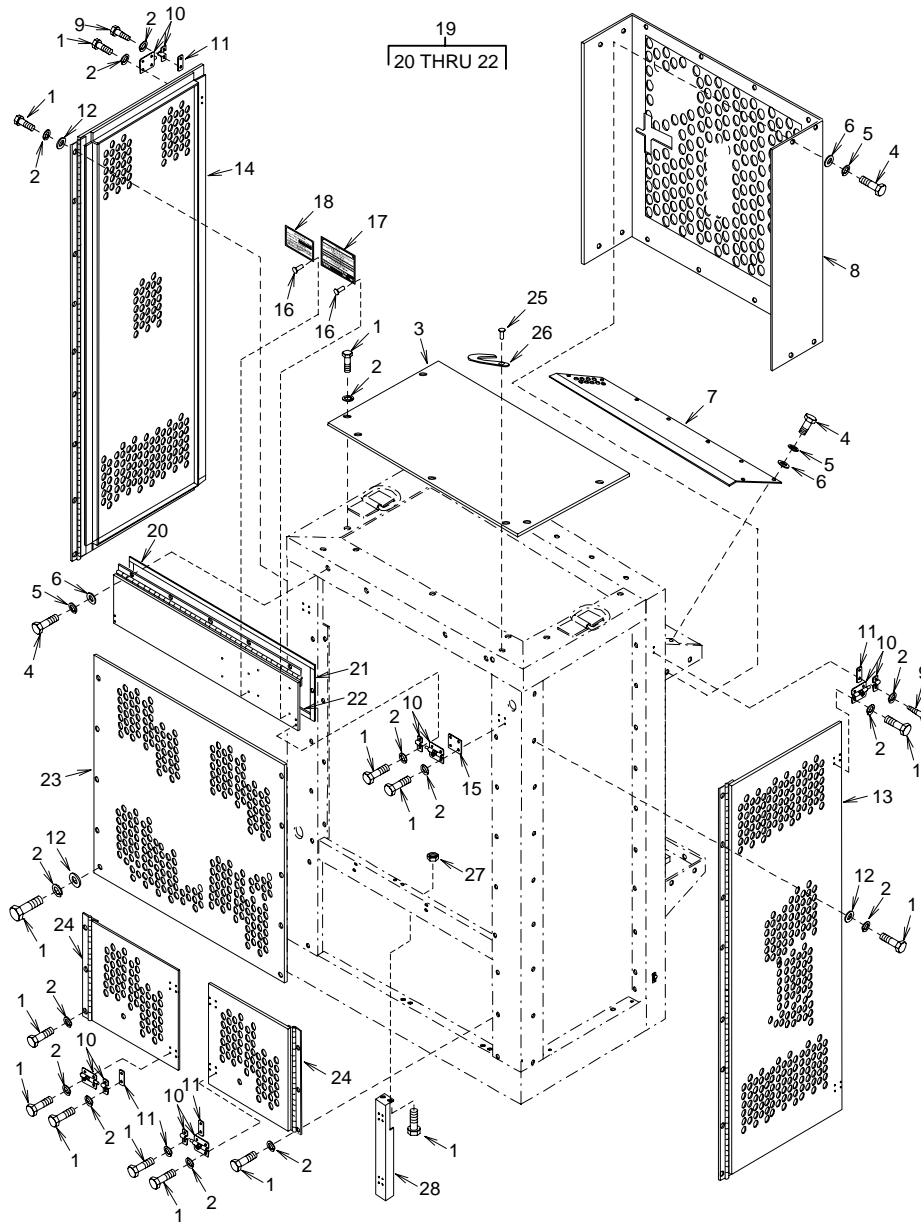


Figure 1. Panels and Guards

(1) ITEM NO.	(2) SMR CODE	(3) NSN	(4) CAGEC	(5) PART NUMBER	(6) DESCRIPTION AND USABLE ON CODE (UOC)	(7) QTY
GROUP 01 PANELS AND GUARDS						
FIGURE 1 PANELS AND GUARDS						
1	XDOZZ		94833	500K1928-21	BOLT, HEX HEAD.....	97
2	XDOZZ		94833	500K1950-3	WASHER, LOCK.....	91
3	PAOZZ	5340-01-485-1128	94833	150K0133-1	COVER, ACCESS, TOP	1
4	XDOZZ		94833	500K1928-13	BOLT, HEX HEAD.....	28
5	XDOZZ		94833	500K1950-2	WASHER, LOCK.....	28
6	XDOZZ		94833	500K1926-2	WASHER, FLAT.....	28
7	PAOZZ	5340-01-485-1185	94833	150K0154-1	COVER, ACCESS,AIR OUTLET ..	1
8	PBOZZ	5340-01-485-1194	94833	150K0036-1	COVER, ACCESS.....	1
9	PAOZZ	5305-00-273-5499	96906	MS51850-74	SCREW, TAPPING.....	8
10	PAOZZ	5340-01-486-2051	81348	A-A-466/TYI-FZ	2.5L BOLT, BARREL.....	10
11	PAOZZ	5365-01-484-3015	94833	150K0038-1	SPACER, PLATE.....	8
12	XDOZZ		94833	500K1926-3	WASHER, FLAT.....	28
13	PAOZZ	5340-01-485-0025	94833	150K0136-1	DOOR, ACCESS, GENERAL.....	1
14	PAOZZ	5340-01-485-0007	94833	150K0136-2	DOOR, ACCESS, GENERAL.....	1
15	PAOZZ	5365-01-484-3014	94833	150K0207-1	SPACER, PLATE.....	2
16	PAOZZ	5320-00-932-1972	81349	M24243/6-A402H	RIVET, BLIND.....	4
17	PAOZZ	9905-01-493-8108	94833	120K1489	PLATE, IDENTIFICATION	1
18	XDOZZ		94833	120K1521	PLATE, WARRANTY.....	1
19	PAFFZ	5340-01-485-0029	94833	150K0173-1	DOOR, ACCESS, GENERAL.....	1
20	MFFZZ		94833	150K0175-5	.GASKET, DOOR 0.125 X 0.8437 X 34.750, MAKE FROM GASKET, P/N ASTM-D-1056-2A2C2F2	1
21	MFFZZ			150K0175-1	.GASKET, DOOR 0.1875 X 0.875 X 8 IN, MAKE FROM GASKET, P/N ASTM-D-1056-2A2C2F2	2
22	MFFZZ			150K0175-3	.GASKET, DOOR 0.1875 X 0.875 X 32.6875, MAKE FROM GASKET, P/N ASTM-D-1056 - 2A2C2F2	1
23	PAOZZ	5340-01-484-9995	94833	150K0127-1	COVER, ACCESS.....	1
24	PAOZZ	5340-01-485-0010	94833	150K0121-1	DOOR, ACCESS, GENERAL, FRONT, BOTTOM	1
25	XDOZZ		97403	13214E3789-4	RIVET, BLIND.....	2
26	XDOZZ		94833	150K0180	CLIP, DOOR HOLDER.....	2
27	XDOZZ		94833	500K1927-3	NUT, SELF-LOCKING.....	4
28	XDOZZ		94833	150K0092-1	POST, CENTER.....	1

END OF FIGURE

UNIT, DIRECT SUPPORT AND GENERAL SUPPORT MAINTENANCE

REFRIGERATION UNIT, MECHANICAL, 10K BTU, ELECTRIC
MODEL F10000RE

ELECTRICAL AND CONTROL
CONTROL BOX

REPAIR PARTS LIST

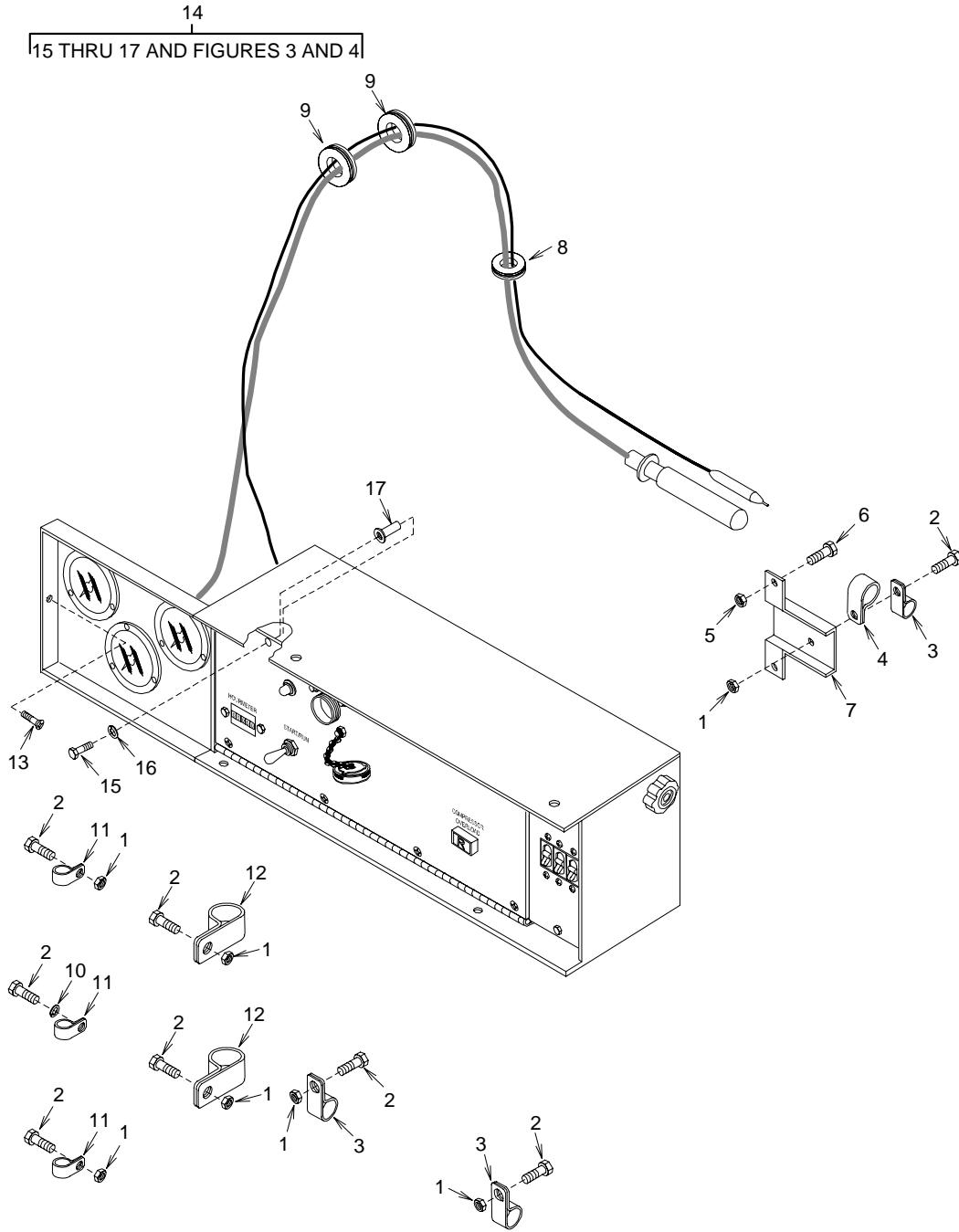


Figure 2. Control Box

(1) ITEM NO.	(2) SMR CODE	(3) NSN	(4) CAGEC	(5) PART NUMBER	(6) DESCRIPTION AND USABLE ON CODE (UOC)	(7) QTY
GROUP 02 ELECTRICAL AND CONTROL						
FIGURE 2 CONTROL BOX						
1	XDOZZ		94833	500K1927-3	NUT, SELF-LOCKING.....	7
2	XDOZZ		94833	500K1927-21	BOLT, HEX HEAD.....	8
3	PAOZZ	5340-01-148-3722	96906	MS21919WCG-6	CLAMP, LOOP.....	3
4	XDOZZ		96906	MS21919WCG-8	CLAMP, LOOP.....	1
5	PAOZZ	5310-00-094-3421	78189	501P10080000AM B	NUT, PLAIN, ASSEMBLED....	2
6	XDOZZ		94833	500K1928-19	BOLT, HEX HEAD.....	2
7	XDOZZ		94833	150K0144-4	BRACKET, SENSING BULB .	1
8	PAOZZ	5325-00-174-9312	96906	MS35489-36	GROMMET, NONMETALLIC....	1
9	PAOZZ	5325-00-174-9008	96906	MS35489-15	GROMMET, NONMETALLIC...	2
10	XDOZZ		94833	500K1950-3	WASHER, LOCK.....	1
11	PAOZZ	5340-00-291-5323	96906	MS21919WDG-4	CLAMP, LOOP.....	3
12	XDOZZ		96906	MS21919WDG-17	CLAMP, LOOP.....	2
13	XDOZZ		96906	MS24693-C72	SCREW, MACHINE.....	8
14	XBOOO		94833	151K0009-1	CONTROL BOX ASSY.....	1
15	XDOZZ		94833	500K1928-19	.BOLT,HEX HEAD.....	2
16	XDOZZ		94833	500K1950-3	.WASHER, LOCK.....	2
17	XDOZZ		96906	MS27130-CR19K	.NUT, PLAIN, BLIND RIVET..	2

END OF FIGURE

UNIT, DIRECT SUPPORT AND GENERAL SUPPORT MAINTENANCE

REFRIGERATION UNIT, MECHANICAL, 10K BTU, ELECTRIC
MODEL F1000RE

ELECTRICAL AND CONTROL
CONTROL BOX WIRES AND CABLES

REPAIR PARTS LIST

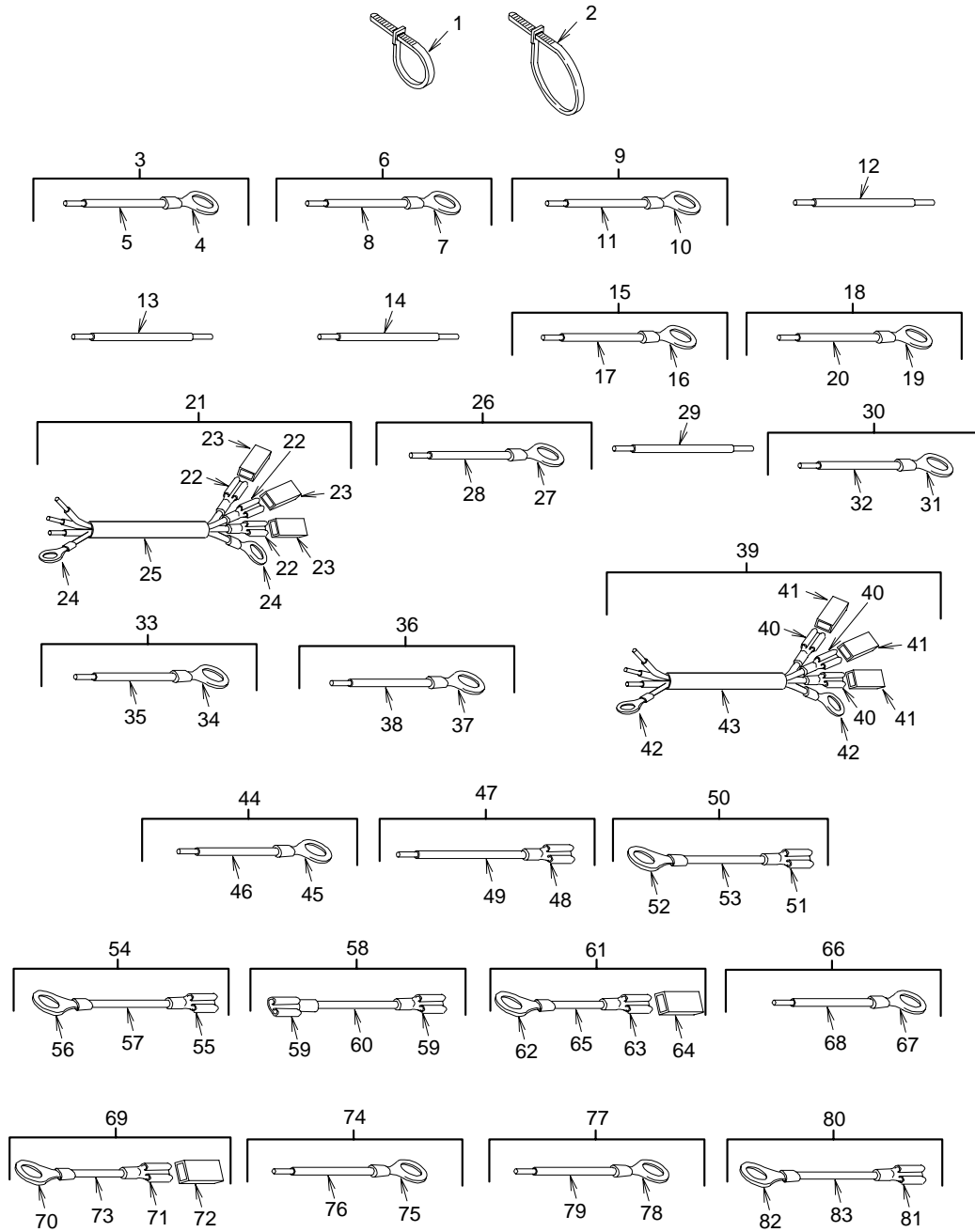


Figure 3. Control Box Wires and Cables
Sheet 1 of 2

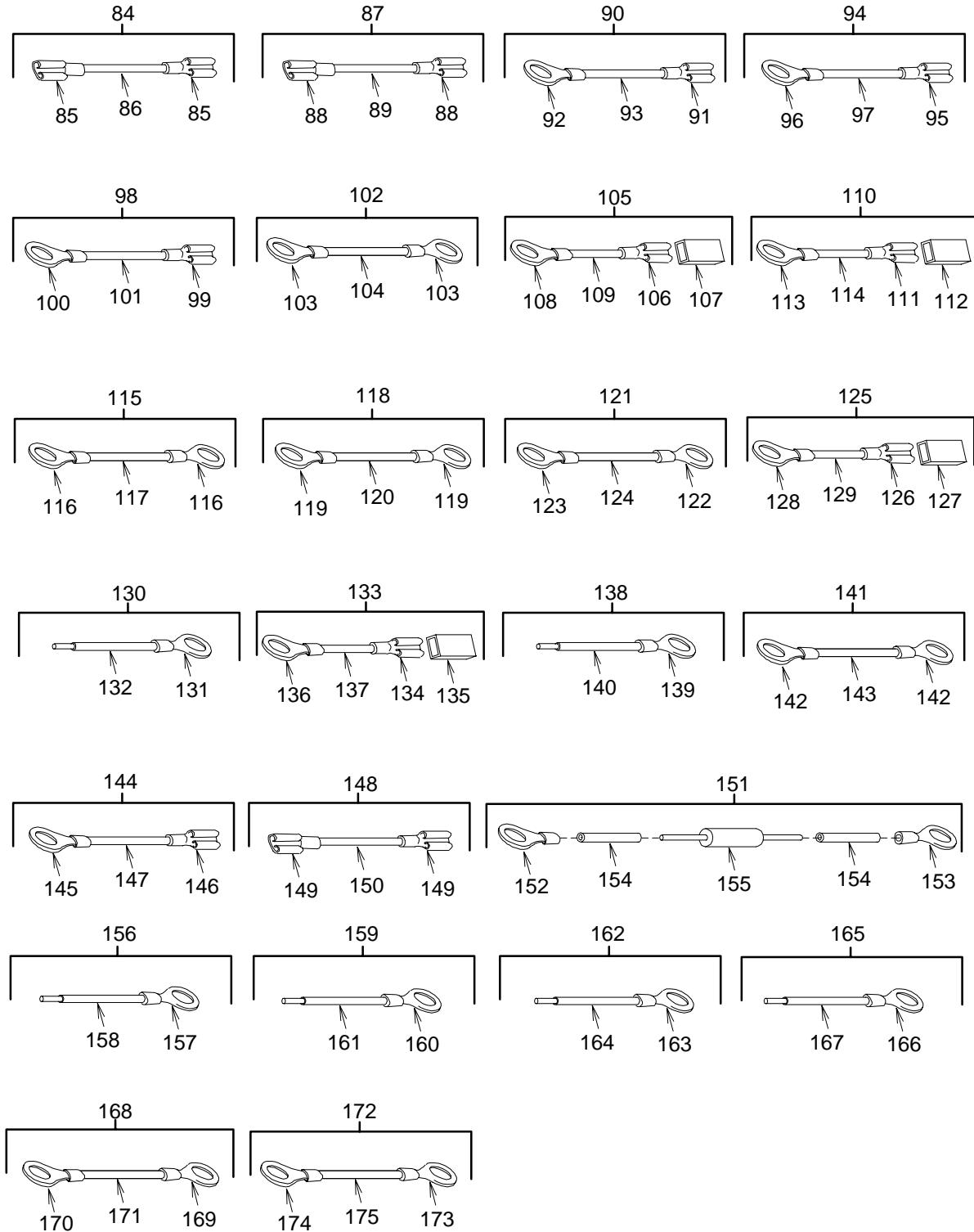


Figure 3. Control Box Wires and Cables
Sheet 2 of 2

(1) ITEM NO.	(2) SMR CODE	(3) NSN	(4) CAGEC	(5) PART NUMBER	(6) DESCRIPTION AND USABLE ON CODE (UOC)	(7) QTY
GROUP 02 ELECTRICAL AND CONTROL						
FIGURE 3 CONTROL BOX WIRES AND CABLES						
1	PAOZZ	5975001563253	96906	MS3367-2-9	.STRAP,TIEDOWN,ELECTRICAL	10
2	PAOZZ	5975007275153	96906	MS3367-4-9	.STRAP,TIEDOWN,ELECTRICAL	10
3	AOOOO		94833	151K0021-1	..LEAD,ELECTRICAL	1
4	PAOZZ	5940001434794	98410	C-828-10	..TERMINAL,LUG	1
5	MOOZZ		94833	151K0021-1/1	..WIRE,ELECTRICAL 24 IN LG, MAKE FROM WIRE,ELECTRICAL, P/N M5086/2-12-9	1
6	AOOOO		94833	151K0021-2	..LEAD,ELECTRICAL	1
7	PAOZZ	5940001434794	81343	MS25036-112	..TERMINAL,LUG	1
8	MOOZZ		94833	151K0021-2/1	..WIRE,ELECTRICAL 24 IN LG, MAKE FROM WIRE,ELECTRICAL, P/N M5086/2-12-9	1
9	AOOOO		94833	151K0021-3	..LEAD,ELECTRICAL	1
10	PAOZZ	5940001434794	98410	C-828-10	..TERMINAL,LUG	1
11	MOOZZ		94833	151K0021-3/1	..WIRE,ELECTRICAL 24 IN LG, MAKE FROM WIRE,ELECTRICAL, P/N M5086/2-12-9	1
12	MOOZZ		94833	151K0021-4	..LEAD,ELECTRICAL 12 IN LG, FROM WIRE,ELECTRICAL, P/N M5086/2-14-9	1
13	MOOZZ		94833	151K0021-5	..LEAD,ELECTRICAL 12 IN LG, MAKE FROM WIRE,ELECTRICAL, P/N M5086/2-14-9	1
14	MOOZZ		94833	151K0021-6	..LEAD,ELECTRICAL 12 IN LG, MAKE FROM WIRE,ELECTRICAL, P/N M5086/2-14-9	1
15	AOOOO		94833	151K0021-7	..LEAD,ELECTRICAL	1
16	PAOZZ	5940001434774	81343	MS25036-153	..TERMINAL,LUG	1
17	MOOZZ		94833	151K0021-7/2	..WIRE,ELECTRICAL 12 IN LG, MAKE FROM WIRE,ELECTRICAL, P/N M5086/2-14-9	1
18	AOOOO		94833	151K0021-8	..LEAD,ELECTRICAL	1
19	PAOZZ	5940001434774	81343	MS25036-153	..TERMINAL,LUG	1
20	MOOZZ		94833	151K0021-8/2	WIRE,ELECTRICAL 12 IN LG, MAKE FROM WIRE,ELECTRICAL, P/N M5086/2-14-9	1
21	AOOOO		94833	151K0021-10 1 TO 3	..CABLE	1
22	PAOZZ	5940001434661	89346	165565R1	..TERMINAL,QUICK DISCONNECT	3
23	PAOZZ	5970004948285	00779	480054-3	..INSULATOR,HOUSING	3
24	PAOZZ	5940001434794	81343	MS25036-112	..TERMINAL,LUG	2
25	MOOZZ		4833	51K0021-10/13	..CABLE 100 IN LG, MAKE FROM 500K1915	1
26	AOOOO		94833	151K0021-14	..LEAD,ELECTRICAL	1
27	PAOZZ	5940001434771	81343	MS25036-103	..TERMINAL,LUG	1

(1) ITEM NO.	(2) SMR CODE	(3) NSN	(4) CAGEC	(5) PART NUMBER	(6) DESCRIPTION AND USABLE ON CODE (UOC)	(7) QTY
28	MOOZZ		94833	151K0021-14/3	..WIRE,ELECTRICAL 30 IN LG, MAKE FROM WIRE,ELECTRICAL, P/N M5086/2-18-9	1
29	MOOZZ		94833	151K0021-15	..LEAD,ELECTRICAL 12 IN LG, MAKE FROM WIRE,ELECTRICAL, P/N M5086/2-18-9	1
30	AOOOO		94833	151K0021-16	..LEAD,ELECTRICAL	1
31	PAOZZ	5940002048966	98410	AA-832-06	..TERMINAL,LUG	1
32	MOOZZ		94833	151K0021-16/3	..WIRE,ELECTRICAL 12 IN LG, MAKE FROM WIRE,ELECTRICAL, P/N M5086/2-18-9	1
33	AOOOO		94833	151K0021-17	..LEAD,ELECTRICAL	1
34	PAOZZ	5940002048966	81343	MS25036-102	..TERMINAL,LUG	1
35	MOOZZ		94833	151K0021-17/3	..WIRE,ELECTRICAL 106 IN LG, MAKE FROM WIRE,ELECTRICAL, P/N M5086/2-18-9	1
36	AOOOO		94833	151K0021-18	..LEAD,ELECTRICAL	1
37	PAOZZ	5940002048966	81343	MS25036-102	..TERMINAL,LUG	1
38	MOOZZ		94833	151K0021-18/3	..WIRE,ELECTRICAL 104 IN LG, MAKE FROM WIRE,ELECTRICAL, P/N M5086/2-18-9	1
39	AOOOO		94833	151K0021-19 TO 22	..CABLE	1
40	PAOZZ	5940001434661	89346	165565R1	..TERMINAL,QUICK DISCONNECT	3
41	PAOZZ	5970004948285	00779	480054-3	..INSULATOR,HOUSING	3
42	PAOZZ	5940001434780	81343	AS25036-108	..TERMINAL,LUG	2
43	MOOZZ		94833	151K0021-19/14	..CABLE 102 IN LG, MAKE FROM 500K1915	1
44	AOOOO		94833	151K0021-23	..LEAD,ELECTRICAL	1
45	PAOZZ	5940002048966	81343	MS25036-102	..TERMINAL,LUG	1
46	MOOZZ		94833	151K0021-23/3	..WIRE,ELECTRICAL 24 IN LG, MAKE FROM WIRE,ELECTRICAL, P/N M5086/2-18-9	1
47	AOOOO		94833	151K0021-24	..LEAD,ELECTRICAL	1
48	PAOZZ	5940009489686	00779	42599-2	..TERMINAL,QUICK DISCONNECT	1
49	MOOZZ		94833	151K0021-24/3	..WIRE,ELECTRICAL 12 IN LG, MAKE FROM WIRE,ELECTRICAL, P/N M5086/2-18-9	1
50	AOOOO		94833	151K0021-25	..LEAD,ELECTRICAL	1
51	XDOZZ		16004	82898	..TERMINAL,FEMALE	1
52	PAOZZ	5940001434794	81343	MS25036-112	..TERMINAL,LUG	1
53	MOOZZ		94833	151K0021-25/3	..WIRE,ELECTRICAL 120 IN LG, MAKE FROM WIRE,ELECTRICAL, P/N M5086/2-18-9	1
54	AOOOO		94833	151K0021-26	..LEAD,ELECTRICAL	1
55	PAOZZ	5940009489686	00779	42599-2	..TERMINAL,QUICK DISCONNECT	1
56	PAOZZ	5940002048966	81343	MS25036-102	..TERMINAL,LUG	1
57	MOOZZ		94833	151K0021-26/3	..WIRE,ELECTRICAL 24 IN LG, MAKE FROM WIRE,ELECTRICAL, P/N M5086/2-18-9	1

(1) ITEM NO.	(2) SMR CODE	(3) NSN	(4) CAGEC	(5) PART NUMBER	(6) DESCRIPTION AND USABLE ON CODE (UOC)	(7) QTY
58	AOOOO		94833	151K0021-27	.LEAD,ELECTRICAL	1
59	PAOZZ	5940009489686	00779	42599-2	..TERMINAL,QUICK DISCONNECT	2
60	MOOZZ		94833	151K0021-27/3	..WIRE,ELECTRICAL 12 IN LG, MAKE FROM WIRE,ELECTRICAL, P/N M5086/2-18-9	1
61	AOOOO		94833	151K0021-28	.LEAD,ELECTRICAL	1
62	PAOZZ	5940005571629	81343	MS25036-149	..TERMINAL,LUG	1
63	PAOZZ	5940006209780	00779	42282-2	..TERMINAL,QUICK DISCONNECT	1
64	PAOZZ	5970004948285	00779	480054-3	..INSULATOR,HOUSING	1
65	MOOZZ		94833	151K0021-28/3	..WIRE,ELECTRICAL 120 IN LG, MAKE FROM WIRE,ELECTRICAL, P/N M5086/2-18-9	1
66	AOOOO		94833	151K0021-29	.LEAD,ELECTRICAL	1
67	PAOZZ	5940002048966	81343	MS25036-102	TERMINAL,LUG	1
68	MOOZZ		94833	151K0021-29/3	..WIRE,ELECTRICAL 108 IN LG, MAKE FROM WIRE,ELECTRICAL, P/N M5086/2-18-9	1
69	AOOOO		94833	151K0021-30	.LEAD,ELECTRICAL	1
70	PAOZZ	5940005571629	81343	MS25036-149	..TERMINAL,LUG	1
71	PAOZZ	5940006209780	00779	42282-2	..TERMINAL,QUICK DISCONNECT	1
72	PAOZZ	5970004948285	00779	480054-3	..INSULATOR,HOUSING	1
73	MOOZZ		94833	151K0021-30/3	..WIRE,ELECTRICAL 120 IN LG, MAKE FROM WIRE,ELECTRICAL, P/N M5086/2-18-9	1
74	AOOOO		94833	151K0021-31	.LEAD,ELECTRICAL	1
75	PAOZZ	5940002048966	81343	MS25036-102	..TERMINAL,LUG	1
76	MOOZZ		94833	151K0021-31/3	..WIRE,ELECTRICAL 106 IN LG, MAKE FROM WIRE,ELECTRICAL, P/N M5086/2-18-9	1
77	AOOOO		94833	151K0021-32	.LEAD,ELECTRICAL	1
78	PAOZZ	5940002048966	81343	MS25036-102	..TERMINAL,LUG	1
79	MOOZZ		94833	151K0021-32/3	..WIRE,ELECTRICAL 12 IN LG, MAKE FROM WIRE,ELECTRICAL, P/N M5086/2-18-9	1
80	AOOOO		94833	151K0021-33	.LEAD,ELECTRICAL	1
81	PAOZZ	5940009489686	00779	42599-2	..TERMINAL,QUICK DISCONNECT	1
82	PAOZZ	5940002048966	81343	MS25036-102	..TERMINAL,LUG	1
83	MOOZZ		94833	151K0021-33/3	..WIRE,ELECTRICAL 24 IN LG, MAKE FROM WIRE,ELECTRICAL, P/N M5086/2-18-9	1
84	AOOOO		94833	151K0021-34	.LEAD,ELECTRICAL	1
85	PAOZZ	5940009489686	00779	42599-2	..TERMINAL,QUICK DISCONNECT	2
86	MOOZZ		94833	151K0021-34/3	..WIRE,ELECTRICAL 12 IN LG, MAKE FROM WIRE,ELECTRICAL, P/N M5086/2-18-9	1
87	AOOOO		94833	151K0021-35	.LEAD,ELECTRICAL	1
88	PAOZZ	5940009489686	00779	42599-2	.TERMINAL,QUICK DISCONNECT	2

(1) ITEM NO.	(2) SMR CODE	(3) NSN	(4) CAGEC	(5) PART NUMBER	(6) DESCRIPTION AND USABLE ON CODE (UOC)	(7) QTY
89	MOOZZ		94833	151K0021-35/3	..WIRE,ELECTRICAL 3 IN LG, MAKE FROM WIRE,ELECTRICAL, P/N M5086/2-18-9	1
90	AOOOO		94833	151K0021-36	.LEAD,ELECTRICAL.....	1
91	PAOZZ	5940009489686	00779	42599-2	..TERMINAL,QUICK DISCONNECT	1
92	PAOZZ	5940001434771	81343	MS25036-103	..TERMINAL,LUG	1
93	MOOZZ		94833	151K0021-36/3	..WIRE,ELECTRICAL 24 IN LG, MAKE FROM WIRE,ELECTRICAL, P/N M5086/2-18-9	1
94	AOOOO		94833	151K0021-37	.LEAD,ELECTRICAL.....	1
95	PAOZZ	5940009489686	00779	42599-2	..TERMINAL,QUICK DISCONNECT	1
96	PAOZZ	5940001434771	81343	MS25036-103	..TERMINAL,LUG	1
97	MOOZZ		94833	151K0021-37/3	..WIRE,ELECTRICAL 12 IN LG, MAKE FROM WIRE,ELECTRICAL, P/N M5086/2-18-9	1
98	AOOOO		94833	151K0021-38	.LEAD,ELECTRICAL.....	1
99	PAOZZ	5940009489686	00779	42599-2	..TERMINAL,QUICK DISCONNECT	1
100	PAOZZ	5940001434771	81343	MS25036-103	..TERMINAL,LUG	1
101	MOOZZ		94833	151K0021-38/3	..WIRE,ELECTRICAL 12 IN LG, MAKE FROM WIRE,ELECTRICAL, P/N M5086/2-18-9	1
102	AOOOO		94833	151K0021-39	.LEAD,ELECTRICAL.....	1
103	PAOZZ	5940002048966	81343	MS25036-102	..TERMINAL,LUG	2
104	MOOZZ		94833	151K0021-39/3	..WIRE,ELECTRICAL 24 IN LG, MAKE FROM WIRE,ELECTRICAL, P/N M5086/2-18-9	1
105	AOOOO		94833	151K0021-40	.LEAD,ELECTRICAL.....	1
106	PAOZZ	5940006209780	00779	42282-2	..TERMINAL,QUICK DISCONNECT	1
107	PAOZZ	5970004948285	00779	480054-3	..INSULATOR,HOUSING	1
108	PAOZZ	5940002048966	81343	MS25036-102	..TERMINAL,LUG	1
109	MOOZZ		94833	151K0021-40/3	..WIRE,ELECTRICAL 120 IN LG, MAKE FROM WIRE,ELECTRICAL, P/N M5086/2-18-9	1
110	AOOOO		94833	151K0021-41	.LEAD,ELECTRICAL.....	1
111	PAOZZ	5940006209780	00779	42282-2	..TERMINAL,QUICK DISCONNECT	1
112	PAOZZ	5970004948285	00779	480054-3	..INSULATOR,HOUSING	1
113	PAOZZ	5940002048966	81343	MS25036-102	..TERMINAL,LUG	1
114	MOOZZ		94833	151K0021-41/3	..WIRE,ELECTRICAL 113 IN LG, MAKE FROM WIRE,ELECTRICAL, P/N M5086/2-18-9	1
115	AOOOO		94833	151K0021-42	.LEAD,ELECTRICAL.....	1
116	PAOZZ	5940002048966	81343	MS25036-102	..TERMINAL,LUG	2
117	MOOZZ		94833	151K0021-42/3	..WIRE,ELECTRICAL 12 IN LG, MAKE FROM WIRE,ELECTRICAL, P/N M5086/2-18-9	1
118	AOOOO		94833	151K0021-43	.LEAD,ELECTRICAL.....	1
119	PAOZZ	5940002048966	81343	MS25036-102	..TERMINAL,LUG	2
120	MOOZZ		94833	151K0021-43/3	..WIRE,ELECTRICAL 12 IN LG, MAKE FROM WIRE,ELECTRICAL, P/N M5086/2-18-9	1
121	AOOOO		94833	151K0021-44	.LEAD,ELECTRICAL.....	1

(1) ITEM NO.	(2) SMR CODE	(3) NSN	(4) CAGEC	(5) PART NUMBER	(6) DESCRIPTION AND USABLE ON CODE (UOC)	(7) QTY
122	PAOZZ	5940002048966	81343	MS25036-102	..TERMINAL,LUG	1
123	PAOZZ	5940001434771	81343	MS25036-103	..TERMINAL,LUG	1
124	MOOZZ		94833	151K0021-44/3	..WIRE,ELECTRICAL 12 IN LG, MAKE FROM WIRE,ELECTRICAL, P/N M5086/2-18-9	1
125	AOOOO		94833	151K0021-45	..LEAD,ELECTRICAL	1
126	PAOZZ	5940006209780	00779	42282-2	..TERMINAL,QUICK DISCONNECT	1
127	PAOZZ	5970004948285	00779	480054-3	..INSULATOR,HOUSING	1
128	PAOZZ	5940002048966	81343	MS25036-102	..TERMINAL,LUG	1
129	MOOZZ		94833	151K0021-45/3	..WIRE,ELECTRICAL 100 IN LG, MAKE FROM WIRE,ELECTRICAL, P/N M5086/2-18-9	1
130	AOOOO		94833	151K0021-46	..LEAD,ELECTRICAL	1
131	PAOZZ	5940002048966	81343	MS25036-102	..TERMINAL,LUG	1
132	MOOZZ		94833	151K0021-46/3	..WIRE,ELECTRICAL 12 IN LG, MAKE FROM WIRE,ELECTRICAL, P/N M5086/2-18-9	1
133	AOOOO		94833	151K0021-47	..LEAD,ELECTRICAL	1
134	PAOZZ	5940006209780	00779	42282-2	..TERMINAL,QUICK DISCONNECT	1
135	PAOZZ	5970004948285	00779	480054-3	..INSULATOR,HOUSING	1
136	PAOZZ	5940002048966	81343	MS25036-102	..TERMINAL,LUG	1
137	MOOZZ		94833	151K0021-47/3	..WIRE,ELECTRICAL 120 IN LG, MAKE FROM WIRE,ELECTRICAL, P/N M5086/2-18-9	1
138	AOOOO		94833	151K0021-48	..LEAD,ELECTRICAL	1
139	PAOZZ	5940002048966	81343	MS25036-102	..TERMINAL,LUG	1
140	MOOZZ		94833	151K0021-48/3	..WIRE,ELECTRICAL 20 IN LG, MAKE FROM WIRE,ELECTRICAL, P/N M5086/2-18-9	1
141	AOOOO		94833	151K0021-49	..LEAD,ELECTRICAL	1
142	PAOZZ	5940001434794	81343	MS25036-112	..TERMINAL,LUG	2
143	MOOZZ		94833	151K0021-49/1	..WIRE,ELECTRICAL 12 IN LG, MAKE FROM WIRE,ELECTRICAL, P/N M5086/2-12-9	1
144	AOOOO		94833	151K0021-50	..LEAD,ELECTRICAL	1
145	PAOZZ	5940005571629	81343	MS25036-149	..TERMINAL,LUG	1
146	XDOZZ		16004	82898	..TERMINAL,FEMALE	1
147	MOOZZ		94833	151K0021-50/3	..WIRE,ELECTRICAL 100 IN LG, MAKE FROM WIRE,ELECTRICAL, P/N M5086/2-18-9	1
148	AOOOO		94833	151K0021-51	..LEAD,ELECTRICAL	1
149	XDOZZ		16004	82898	..TERMINAL,FEMALE	2
150	MOOZZ		94833	151K0021-51/3	..WIRE,ELECTRICAL 96 IN LG, MAKE FROM WIRE,ELECTRICAL, P/N M5086/2-18-9	1
151	AOOOO		94833	151K0042-1	..RESISTOR ASSEMBLY	1
152	PAOZZ	5940005571629	81343	MS25036-149	..TERMINAL,LUG	1
153	PAOZZ	5940001139828	81343	MS25036-148	..TERMINAL,LUG	1
154	MOOZZ		94833	151K0042-1/4	..INSULATION,SLEEVING 1.50 IN LG, MAKE FROM INSULATION, SLEEVING, P/N M23053/5-102-0	2

(1) ITEM NO.	(2) SMR CODE	(3) NSN	(4) CAGEC	(5) PART NUMBER	(6) DESCRIPTION AND USABLE ON CODE (UOC)	(7) QTY
155	XDOZZ		12697	VC10F-5K	..RESISTOR,,10W,5K	1
156	AOOOO		94833	151K0021-52	..LEAD,ELECTRICAL.....	1
157	PAOZZ	5940001434794	81343	MS25036-112	..TERMINAL,LUG.....	1
158	MOOZZ		94833	151K0021-52/17	..WIRE,ELECTRICAL 60 IN LG, MAKE FROM WIRE,ELECTRICAL, P/N M5086/2-10-9	1
159	AOOOO		94833	151K0021-53	..LEAD,ELECTRICAL.....	1
160	PAOZZ	5940001434794	81343	MS25036-112	..TERMINAL,LUG.....	1
161	MOOZZ		94833	151K0021-53/17	..WIRE,ELECTRICAL 60 IN LG, MAKE FROM WIRE,ELECTRICAL, P/N M5086/2-10-9	1
162	AOOOO		94833	151K0021-54	..LEAD,ELECTRICAL.....	1
163	PAOZZ	5940001434794	81343	MS25036-112	..TERMINAL,LUG.....	1
164	MOOZZ		94833	151K0021-54/17	..WIRE,ELECTRICAL 60 IN LG, MAKE FROM WIRE,ELECTRICAL, P/N M5086/2-10-9	1
165	AOOOO		94833	151K0021-55	..LEAD,ELECTRICAL.....	1
166	PAOZZ	5940001434794	81343	MS25036-112	..TERMINAL,LUG.....	1
167	MOOZZ		94833	151K0021-55/17	..WIRE,ELECTRICAL 60 IN LG, MAKE FROM WIRE,ELECTRICAL, P/N M5086/2-10-9	1
168	AOOOO		94833	151K0021-56	..LEAD,ELECTRICAL.....	1
169	PAOZZ	5940002048966	81343	MS25036-102	..TERMINAL,LUG.....	1
170	PAOZZ	5940001434794	98410	C-828-10	TERMINAL,LUG.....	1
171	MOOZZ		94833	151K0021-56/17	..WIRE,ELECTRICAL 60 IN LG, MAKE FROM WIRE,ELECTRICAL, P/N M5086/2-10-9	1
172	AOOOO		94833	151K0021-57	..LEAD,ELECTRICAL.....	1
173	PAOZZ	5940002048966	81343	MS25036-102	..TERMINAL,LUG.....	1
174	PAOZZ	5940001434777	81343	MS25036-157	..TERMINAL,LUG.....	1
175	MOOZZ		94833	151K0021-57/17	..WIRE,ELECTRICAL 24 IN LG, MAKE FROM WIRE,ELECTRICAL, P/N M5086/2-10-9	1

END OF FIGURE

UNIT, DIRECT SUPPORT AND GENERAL SUPPORT MAINTENANCE

REFRIGERATION UNIT, MECHANICAL, 10K BTU, ELECTRIC
MODEL F10000RE

ELECTRICAL AND CONTROL
CONTROL BOX ASSEMBLY

REPAIR PARTS LIST

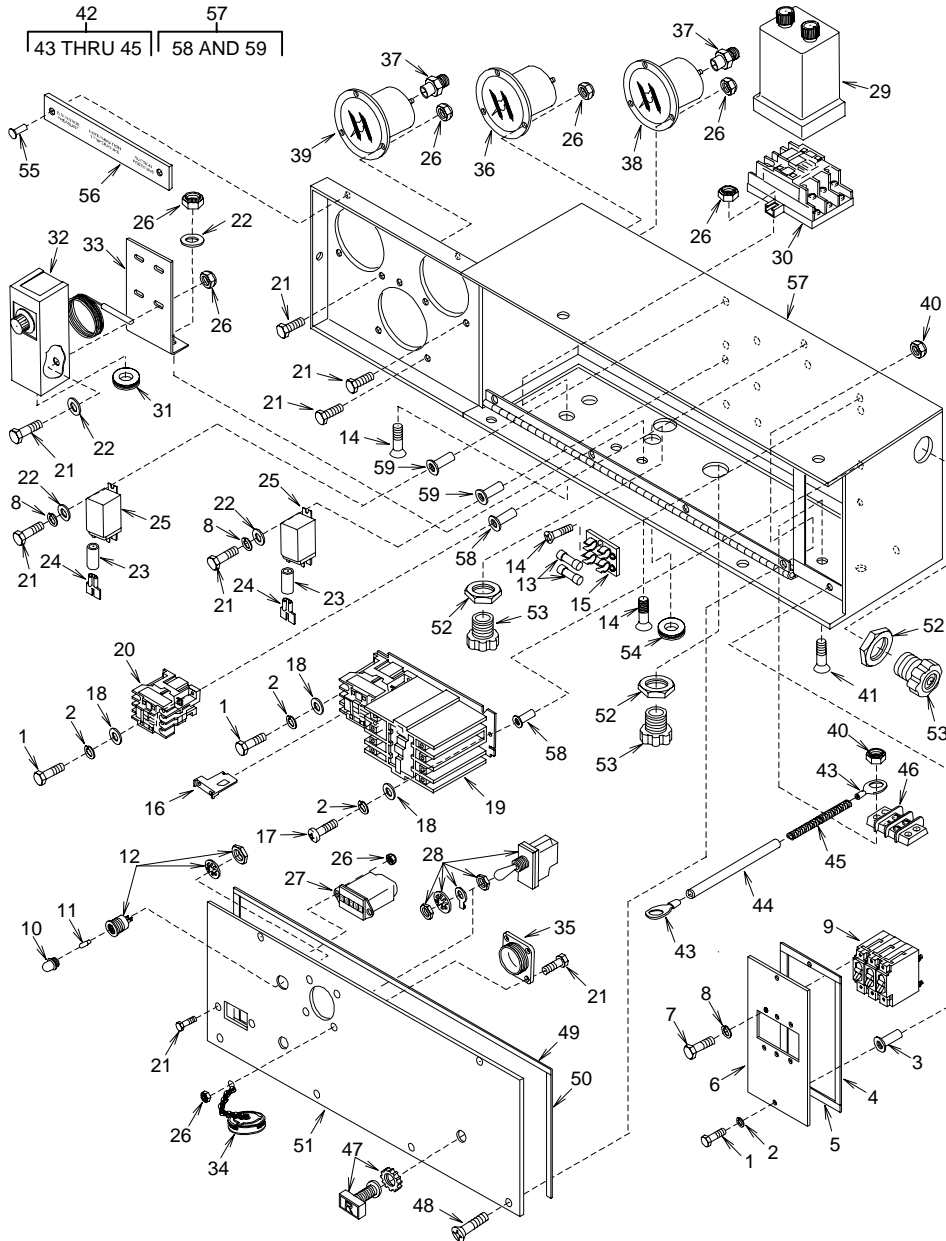


Figure 4. Control Box Assembly

(1) ITEM NO.	(2) SMR CODE	(3) NSN	(4) CAGEC	(5) PART NUMBER	(6) DESCRIPTION AND USABLE ON CODE (UOC)	(7) QTY
GROUP 02 ELECTRICAL AND CONTROL						
FIGURE 4 CONTROL BOX ASSEMBLY						
1	XDOZZ		94833	500K1928-19	.BOLT,HEX HEAD.....	7
2	XDOZZ		94833	500K1950-3	.WASHER,LOCK.....	8
3	XDOZZ		96906	MS27130-CR19K	.NUT,PLAIN,BLIND RIVET	2
4	MOOZZ		94833	151K0030	.GASKET 0.125 THK X 0.500 W X 5.875 L, MAKE FROM GASKET, P/N ASTM-D-1056-2A2C2F2-0.125.....	2
5	MOOZZ		94833	151K0031	.GASKET 0.125 THK X 0.750 W X 3.250 L, MAKE FROM GASKET, P/N ASTM-D-1056-2A2C2F2-0.125.....	2
6	XDOZZ		94833	151K0018	.COVER,CIRCUIT BREAKER	1
7	XDOZZ		94833	500K1928-1	.BOLT,HEX HEAD.....	6
8	XDOZZ		94833	500K1950-1	.WASHER,SPRING LOCK	10
9	PAOZZ	5925-01-486-3185	94833	500K1914-1	.CIRCUIT BREAKER.....	1
10	PAOZZ	6210-01-098-3886	83330	125-1191-403	.LENS,LIGHT.....	1
11	PAOZZ	6240-00-939-7859	92966	120MB	.LAMP,INCANDESCENT	1
12	PAOZZ	6210-00-840-0848	83330	125-0410-1132-403	.LIGHT,INDICATOR	1
13	PAOZZ	5920-00-281-0225	71400	MTH6	.FUSE,CARTRIDGE.....	2
14	PAOZZ	5305-00-717-5593	96906	MS24693-C30	.SCREW,MACHINE.....	6
15	PAOZZ	5920-01-366-0796	71400	S-8301-2	.FUSEHOLDER,BLOCK.....	1
16	PAOZZ	5999-01-291-4103	01121	W60	.HEATER,THERMAL RELEASE	3
17	XBOZZ		94833	53575-10-8	.SCREW,MACHINE.....	1
18	XBOZZ		94833	500K1926-3	.WASHER,FLAT.....	6
19	PAOZZ	6110-01-483-2607	27191	AN16DNOEB	.STARTER,MOTOR.....	1
20	PAOZZ	6110-01-484-4674	94833	152K0189-1	.CONTACTOR,MAGNETIC.....	1
21	XBOZZ		94833	500K1928-5	.BOLT,HEX HEAD.....	23
22	XBOZZ		94833	500K1926-1	.WASHER,FLAT	10
23	MOOZZ		94833	151K0009-1/54	.INSULATION,SLEEVING 0.88 IN LG, MAKE FROM INSULATION,SLEEVING, P/N M23053/5-107-9	5
24	XDOZZ		97403	13225E8194	.TERMINAL,QUICK DISCONNECT	5
25	PAOZZ	5945-01-485-1175	94833	500K1904-1	.RELAY,ELECTROMAGNET	1
26	XDOZZ		94833	500K1927-1	.NUT,SELF-LOCKING.....	29
27	PAOZZ	6645-01-477-5316	74400	20007	.METER,TIME TOTALIZING	1
28	PAOZZ	5930-01-099-9573	81640	8500K9	.SWITCH,TOGGLE	1
29	PAOZZ	6645-01-484-9671	1HM04	1HM04 TDF-220-AKB-24H	.TIMER,SEQUENTIAL.....	1
30	PAOZZ	5935-01-484-7746	51107	51107 QC-11	.SOCKET,PLUG-IN ELECTRONIC COMPONENT	1
31	PAOZZ	5325-00-834-1789	96906	MS35489-118	.GROMMET,NONMETALLIC	1
32	PAOZZ	6685-01-491-3877	50831	A19AAD-25D	.CONTROL,TEMPERATURE INDICATING	1

(1) ITEM NO.	(2) SMR CODE	(3) NSN	(4) CAGEC	(5) PART NUMBER	(6) DESCRIPTION AND USABLE ON CODE (UOC)	(7) QTY
33	XBOZZ		94833	151K0020	.BRACKET,TEMPERATURE CONTROL SWITCH	1
34	PAOZZ	5935-01-175-8417	96906	MS25043-24DA	.COVER,ELECTRICAL CONNECTOR	1
35	XBOZZ		94833	150K0183	.DUMMY STOWAGE CONNECTOR.....	1
36	PAOZZ	6685-00-987-5600	96906	MS27211-2	.THERMOMETER,INDICATING (REFRIGERATOR TEMPERATURE).....	1
37	PAOZZ	4730-00-090-0832	41947	A4622	.ADAPTER,STRAIGHT,PIPE	2
38	PAOZZ	6685-00-948-0928	94833	500K1857-1C	.GAGE,COMPOUND PRESSURE (SUCTION PRESSURE)	1
39	PAOZZ	6685-00-924-9434	61510	1085A27G02	.GAGE,PRESSURE,DIAL INDICATING (DISCHARGE PRESSURE).....	1
40	XDOZZ		94833	500K1927-2	.NUT,SELF-LOCKING.....	6
41	XDOZZ		96906	MS24693-C53	.SCREW,MACHINE.....	2
42	AOOOO		94833	150K0201-1	.STRAP,GROUND	1
43	PAOZZ	5940-00-114-1316	96906	MS20659-130	..TERMINAL,LUG	2
44	MOOZZ		94833	150K0201-1/3	..INSULATION,SLEEVING 4.0 IN LG, MAKE FROM INSULATION,SLEEVING, P/N M23053/5-107-0	1
45	MOOZZ		94833	150K0201-1/1	..BRAID,WIRE,TUBULAR 4 IN LG, MAKE FROM BRAID,TUBULAR, P/N QQ-B-575R30T281	1
46	PAOZZ	5940-00-983-6122	81349	39TB2	.TERMINAL BOARD	1
47	PAOZZ	5930-01-483-4018	94833	152K0118-1	.PUSH BUTTON.....	1
48	PAOZZ	5305-00-066-7327	96906	MS24693-C28	.SCREW,MACHINE	4
49	MOOZZ		94833	151K0028	.GASKET, CONTROL BOX, TOP, 0.125 THK X 0.50 W X 19.75 L, MAKE FROM GASKET, P/N ASTM-D-1056-2A2C2F2-0.125.....	1
50	MOOZZ		94833	151K0096	.GASKET, CONTROL BOX, SIDE. 0.125 THK X 0.50 W X 6.8437 L, MAKE FROM GASKET, P/N ASTM-D-1056-2A2C2F2-0.125.....	2
51	XDOZZ		94833	151K0010	.COVER,CONTROL BOX	1
52	PAOZZ	5975-00-642-7261	03743	BL75	.LOCKNUT,ELECTRICAL	3
53	PAOZZ	5975-00-189-0857	56501	2535	.CONNECTOR,CABLE	3
54	PAOZZ	5325-00-174-5316	96906	MS35489-2	.GROMMET,NONMETALLIC	1
55	PAOZZ	5320-00-903-6767	96906	MS24662-5	.RIVET,BLIND	2
56	PAOZZ	9905-01-493-7629	94833	120K1472	.PLATE,IDENTIFICATION	1
57	XBOOO		94833	151K0017-1	.CONTROL BOX	1
58	XDOZZ		96906	MS27130-CR19K	..NUT,PLAIN,BLIND RIVET	6
59	PAOZZ	5310-00-121-8009	80205	NAS1329C06 KB75	..NUT,PLAIN,BLIND RIVET	6

END OF FIGURE

UNIT, DIRECT SUPPORT AND GENERAL SUPPORT MAINTENANCE

REFRIGERATION UNIT, MECHANICAL, 10K BTU, ELECTRIC
MODEL F10000RE

ELECTRICAL AND CONTROL
SWITCHES AND ELECTRICAL ENCLOSURE ASSEMBLY

REPAIR PARTS LIST

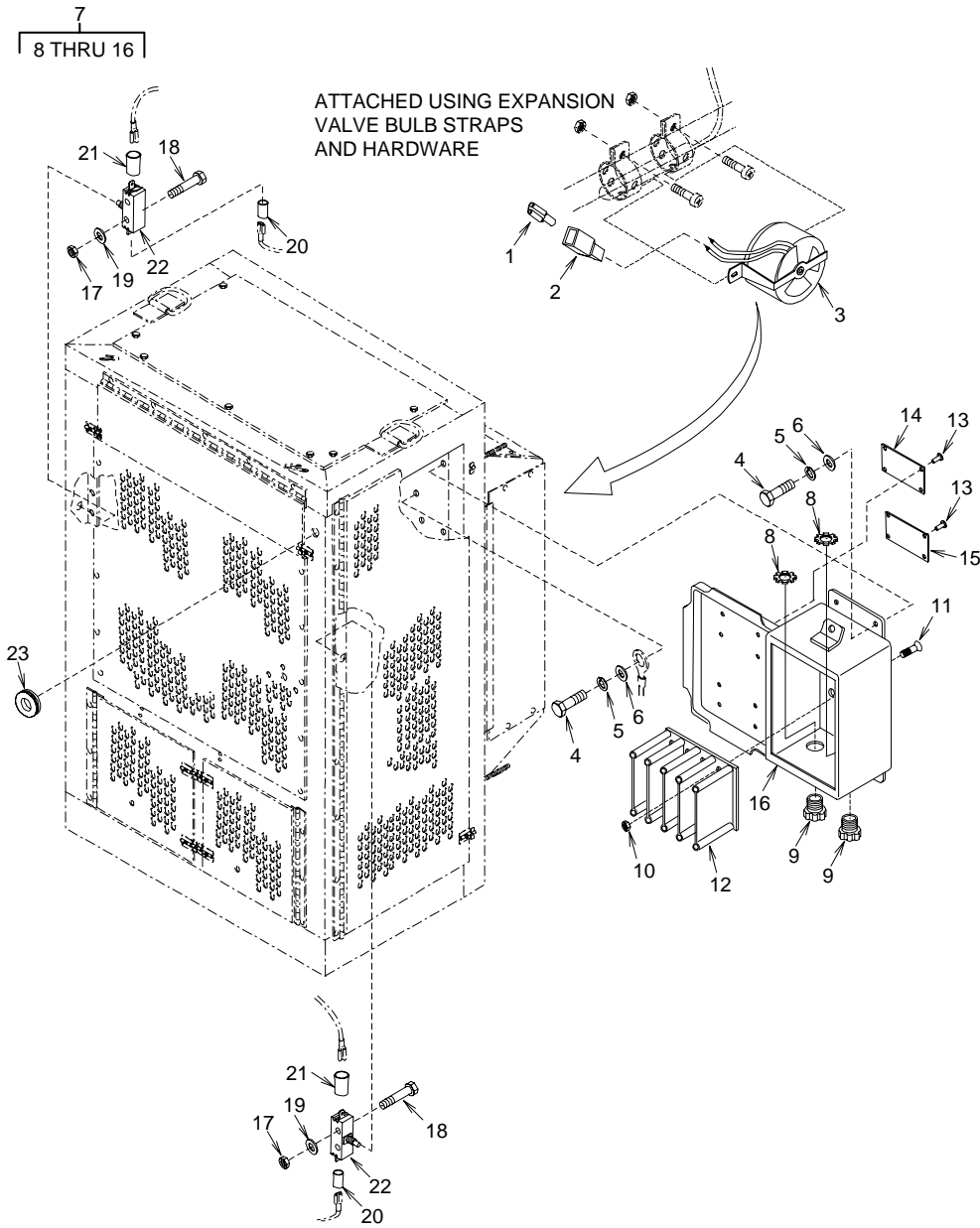


Figure 5. Switches and Electrical Enclosure Assembly

(1) ITEM NO.	(2) SMR CODE	(3) NSN	(4) CAGEC	(5) PART NUMBER	(6) DESCRIPTION AND USABLE ON CODE (UOC)	(7) QTY
GROUP 02 ELECTRICAL AND CONTROL						
FIGURE 5 SWITCHES AND ELECTRICAL ENCLOSURE ASSEMBLY						
1	PAOZA	5940010912560	00779	42565-2	TERMINAL.....	2
2	PAOZZ	5970004948284	00779	480053-3	INSULATOR,HOUSING	2
3	PAOZZ	5930012113339	14859	20640L15-496- 210 L45-2.10	SWITCH,THERMOSTATIC	1
4	XDOZZ		94833	500K1928-28	BOLT,HEX HEAD	5
5	XDOZZ		94833	500K1950-4	WASHER,LOCK	5
6	XDOZZ		94833	500K1926-4	WASHER,FLAT	5
7	XDOOO		94833	149K0018-3	ENCLOSURE ASSEMBLY	1
8	PAOZZ	5975006427261	56501	142	.LOCKNUT,ELECTRICAL	2
9	PAOZZ	5975005396912	59730	2535	.BOX CONNECTOR,ELECTRICAL	2
10	XDOZZ		94833	500K1927-2	.NUT,SELF-LOCKING.....	4
11	XDOZZ		96906	MS24693-C48	.SCREW,MACHINE.....	4
12	PAOZZ	5940014918499	94833	500K2022	.TERMINAL BOARD.....	1
13	PAOZZ	5320009036767	96906	MS24662-5	.RIVET,BLIND.....	8
14	PAOZZ	9905014938749	94833	120K1504-1	.PLATE,INSTRUCTION.....	1
15	PAOZZ	9905014938748	94833	120K1504-3	.PLATE,INSTRUCTION.....	1
16	XDOZZ		94833	149K0020-1	.ENCLOSURE	1
17	XDOZZ		94833	500K1927-1	NUT,SELF-LOCKING	4
18	XDOZZ		94833	500K1928-8	BOLT,HEX HEAD	4
19	XDOZZ		94833	500K1926-1	WASHER,FLAT	4
20	MOOZZ		94833	151K0000-1/204	INSULATION,SLEEVING 1.50 IN LG, MAKE FROM INSULATION,SLEEVING, P/N M23053/5-106-9	2
21	MOOZZ		94833	151K0000-1/205	INSULATION,SLEEVING 1.50 IN LG, MAKE FROM INSULATING,SLEEVING, P/N M23053/5-107-9	2
22	PAOZZ	5930001263132	01963	E13-00M	SWITCH,SENSITIVE.....	2
23	PAOZZ	5325007542187	96906	MS35489-123	GROMMET,NONMETALLIC	1

END OF FIGURE

UNIT, DIRECT SUPPORT AND GENERAL SUPPORT MAINTENANCE

REFRIGERATION UNIT, MECHANICAL, 10K BTU, ELECTRIC
MODEL F10000RE

POWER TRANSMISSION AND AIR HANDLING

REPAIR PARTS LIST

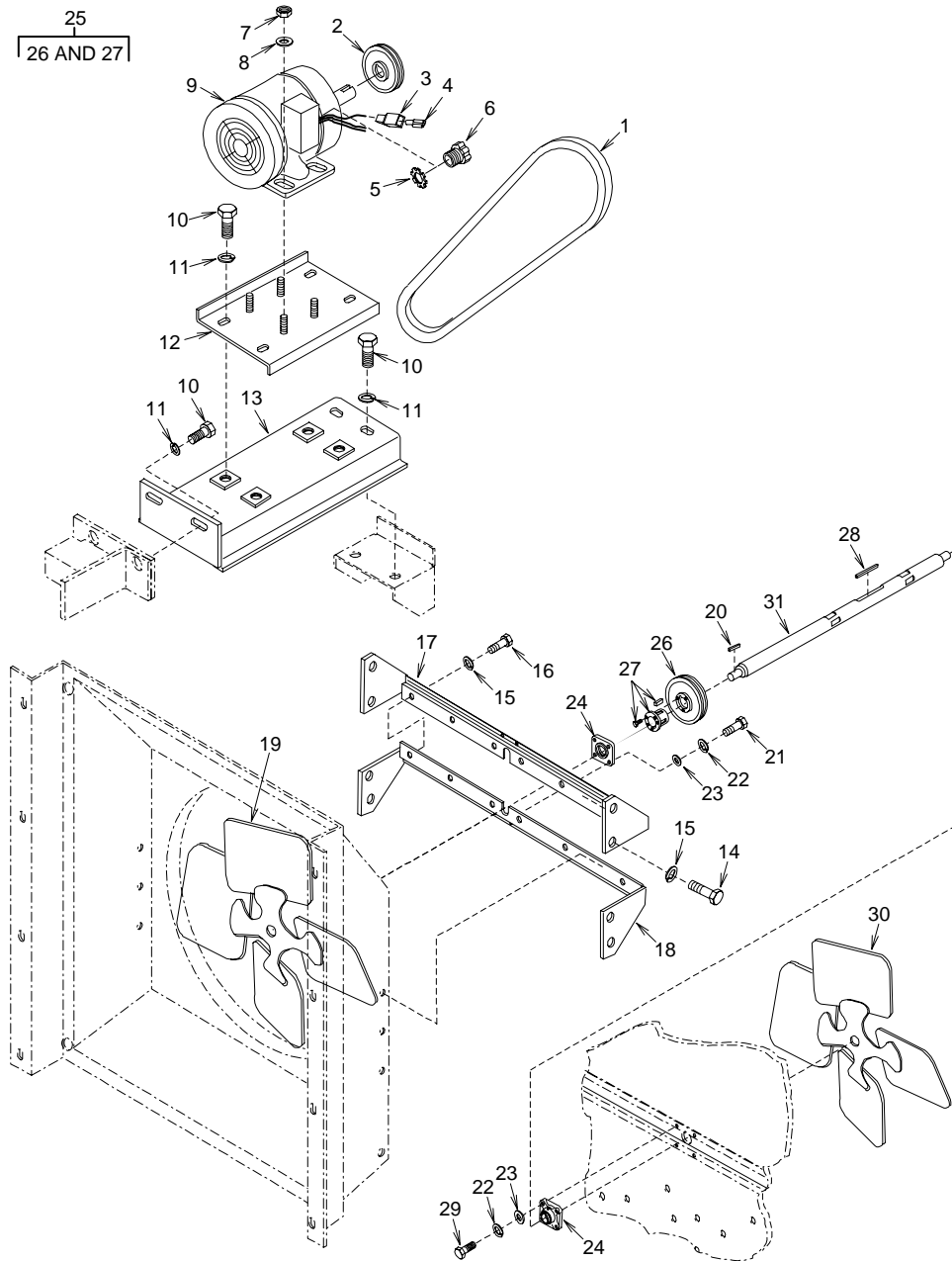


Figure 6. Power Transmission and Air Handling

(1) ITEM NO.	(2) SMR CODE	(3) NSN	(4) CAGEC	(5) PART NUMBER	(6) DESCRIPTION AND USABLE ON CODE (UOC)	(7) QTY
GROUP 03 POWER TRANSMISSION AND AIR HANDLING						
FIGURE 6 POWER TRANSMISSION AND AIR HANDLING						
1	PAOZZ	3030-00-529-0355	58536	A-A-52160/A60	BELT, V.....	1
2	PAOZZ	3020-01-485-0024	71176	BK34	PULLEY, GROOVE.....	1
3	PAOZZ	5970-00-494-8284	00779	480053-3	INSULATOR, HOUSING.....	3
4	PAOZA	5940-01-091-2560	00779	42565-2	TERMINAL.....	3
5	PAOZZ	5310-01-104-6677	03743	141	LOCK NUT.....	1
6	XDOZA		56501	2523	BOX CONNECTOR, ELECTRICAL ...	1
7	XDOZZ		94833	500K1927-5	NUT, SELF-LOCKING.....	4
8	XDOZZ		94833	500K1926-5	WASHER, FLAT.....	12
9	PAOZZ	6105-01-491-4763	94833	500K1861-2	MOTOR, ALTERNATING CURRENT .	1
10	XDOZZ		94833	500K1928-44	BOLT, HEX HEAD.....	8
11	XDOZZ		94833	500K1950-5	WASHER, LOCK.....	8
12	XDOZZ		94833	151K0038-1	BRACKET, ADJUSTING, MOTOR MOUNT	1
13	XDOZZ		94833	151K0032-1	BRACKET, MOTOR MOUNT.....	1
14	XDOZZ		94833	500K1928-30	BOLT, HEX HEAD.....	8
15	XDOZZ		94833	500K1950-4	WASHER, LOCK.....	14
16	XDOZZ		94833	500K1928-28	BOLT, HEX HEAD.....	6
17	XDOZZ		94833	150K0101-1	TOP SUPPORT, BEARING FLANGE, CONDENSER FAN END.....	1
18	XDOZZ		94833	150K0228-1	BOTTOM SUPPORT,.....	1
19	PAOZA	4140-01-484-0644	94833	500K1864-2	IMPELLER, FAN, CENTRIFICAL	1
20	XDFZZ		97384	58313-40189-3	KEY, MACHINE.....	1
21	XDOZZ		94833	500K1928-59	BOLT, HEX HEAD.....	4
22	XDOZZ		94833	500K1950-6	WASHER, SPRING LOCK.....	8
23	PAOZA	5310-01-491-5382	94833	500K1926-6	WASHER, FLAT.....	8
24	PAOZZ	3130-01-485-1737	94833	500K1866	BEARING UNIT, BALL.....	2
25	PAOZZ	3020-01-485-0024	71175	BK34	PULLEY, GROOVE.....	1
26	XAOZZ		71176	ITA44	.SHEAVE, TWO GROOVE.....	1
27	XAOZZ		71176	P1	.BUSHING, SPLIT TAPER....	1
28	PAOZA	5315-00-962-1473	96906	MS20066-257	KEY, MACHINE.....	1
29	XDOZZ		94833	00K1928-58	BOLT, HEX HEAD.....	4
30	PAOZA	4140-01-484-0649	94833	500K1865-3	IMPELLER, FAN, CENTRIFICAL	1
31	PBOZZ	3040-01-486-9368	94833	151K0037-1	SHAFT, SHOULDERED	1

END OF FIGURE

UNIT, DIRECT SUPPORT AND GENERAL SUPPORT MAINTENANCE

REFRIGERATION UNIT, MECHANICAL, 10K BTU, ELECTRIC
MODEL F10000RE

REFRIGERATION SYSTEM
REFRIGERANT PIPING, CONDENSER SECTION

REPAIR PARTS LIST

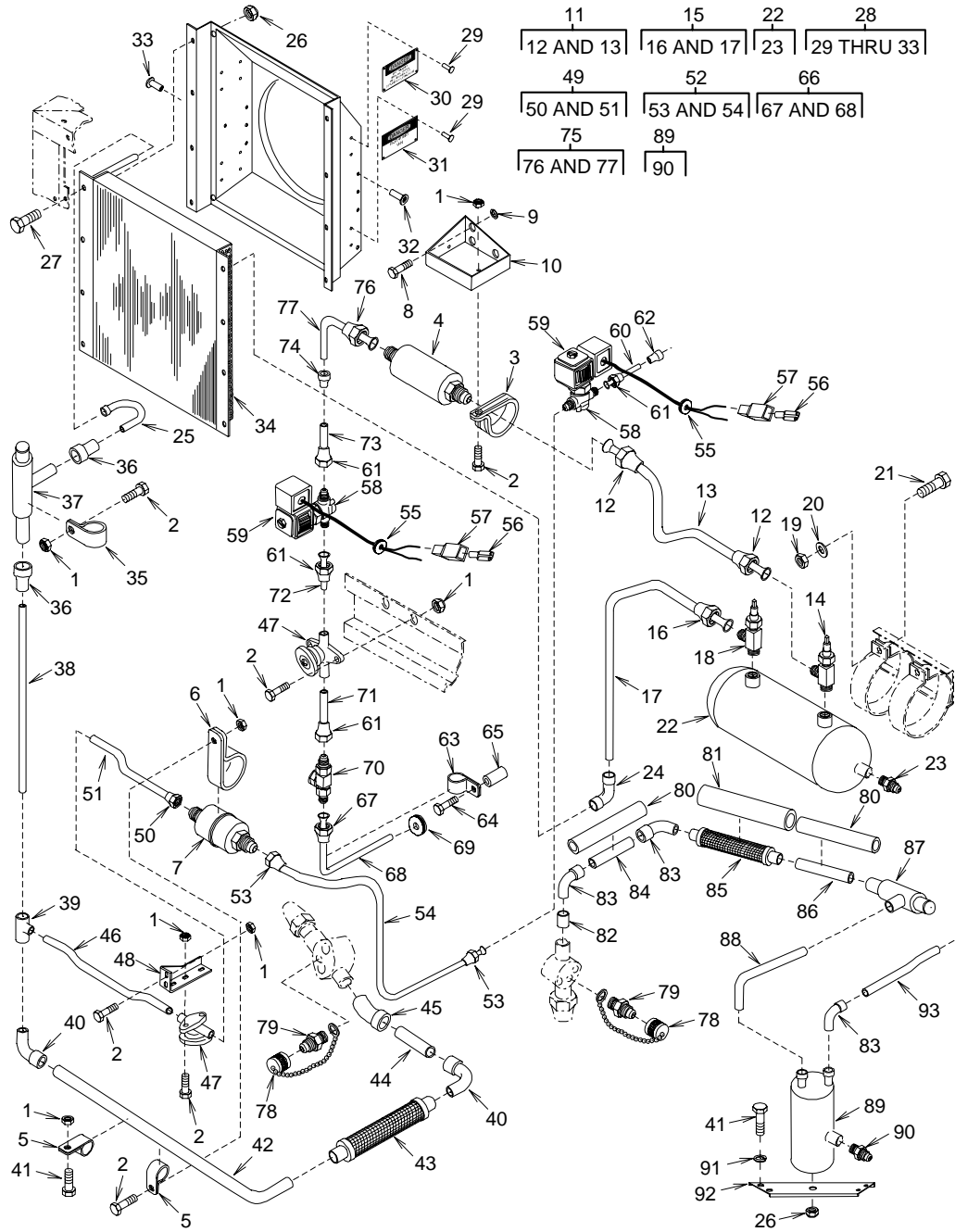


Figure 7. Refrigerant Piping, Condenser Section

(1) ITEM NO.	(2) SMR CODE	(3) NSN	(4) CAGEC	(5) PART NUMBER	(6) DESCRIPTION AND USABLE ON CODE (UOC)	(7) QTY
GROUP 04 REFRIGERATION SYSTEM						
FIGURE 7 REFRIGERANT PIPING, CONDENSER SECTION						
1	XDFZZ		94833	500K1927-3	NUT,SELF-LOCKING	11
2	XDFZZ		94833	500K1928-19	BOLT,HEX HEAD	10
3	PAFZZ	5340-00-842-2134	96906	MS21919WDG -46	CLAMP,LOOP	2
4	PAFZZ	4130-00-922-7083	96906	MS35845-3	FILTER-DRIER,REFRIGERANT	1
5	PAFZZ	5340-00-286-9424	96906	MS21919WDG-14	CLAMP,LOOP	2
6	PAFZZ	5340-00-579-9678	96906	MS21919WDG-32	CLAMP,LOOP	1
7	PAFZZ	4730-01-485-0721	97765	FC6	STRAINER,SEDIMENT	1
8	XDFZZ		94833	500K1928-28	BOLT,HEX HEAD	3
9	XDFZZ		94833	500K1950-3	WASHER,LOCK	3
10	XDFZZ		94833	150K0113	BRACKET,FILTER DRIER	1
11	XDFZZ		94833	151K0052-1	TUBE,RECEIVER TO FILTER	1
12	PAFZZ	4730-00-228-0826	81343	J5138-010166BA	.NUT,TUBE COUPLING	2
13	MFFZZ		94833	151K0052-1/T	.TUBE,COPPER 0.500 OD X 0.032 WALL, 18.69 IN LG, MAKE FROM COPPER TUBING, P/N ASTM-B280	1
14	PAFZZ	4820-01-485-0530	97765	27035	VALVE,FLOW CONTROL	1
15	AFFFF		94833	151K0046-1	TUBE,RECEIVER INLET	1
16	PAFZZ	4730-00-189-2742	96906	MS35872-5	.NUT,TUBE COUPLING	1
17	MFFZZ		94833	151K0046-1/T	.TUBE,COPPER 0.625 OX D 0.035 WALL, 37.75 IN LG, MAKE FROM COPPER TUBING, P/N ASTM-B280	1
18	PAFZZ	4820-01-485-0527	97765	27036	VALVE,FLOW CONTROL	1
19	XDFZZ		94833	500K1927-5	NUT,SELF-LOCKING	2
20	XDFZZ		94833	500K1926-5	WASHER,FLAT	2
21	XBFZZ		94833	500K1928-45	BOLT,HEX HEAD	2
22	PAFZZ	4130-01-491-5024	97765	3391	RECEIVER,LIQUID REFRIGERANT	1
23	PAFZZ	5340-01-485-0689	97765	983-430	PLUG,FUSIBLE	1
24	PAFZZ	4730-01-153-7193	97403	13216E6190-4	ELBOW,TUBE	1
25	MFFZZ		94833	151K0044	TUBE,COPPER	1
26	PAFZZ	5310-01-491-5386	94833	500K1927-6	NUT,SELF-LOCKING,HEAD	9
27	XDFZZ		94833	500K1928-58	BOLT,HEX HEAD	8
28	XDFZZ		94833	150K0083-1	SHROUD,CONDENSER	1
29	PAFZZ	5320-00-932-1972	81349	M24243/6-A402H	RIVET,BLIND	16
30	PAFZZ	9905-01-484-7604	94833	500K1948	PLATE,INSTRUCTION	2
31	PAFZZ	9905-01-493-8109	81337	5-13-5421	PLATE,INSTRUCTION	2
32	PAFZZ	5310-00-993-1548	96906	MS27130-S133K	NUT,PLAIN,BLIND RIVET	6
33	PAFZZ	5310-01-124-3099	96906	MS27130-S20K	.NUT,PLAIN,BLIND RIVET	1
34	PAFZZ	4130-01-487-3061	0A400	980095 3CZ0 603B	CONDENSER COIL,REFRIGERATION	1

(1) ITEM NO.	(2) SMR CODE	(3) NSN	(4) CAGEC	(5) PART NUMBER	(6) DESCRIPTION AND USABLE ON CODE (UOC)	(7) QTY
35	XDFZZ		96906	MS21919WDG30	CLAMP,LOOP	1
36	PAFZZ	4730-00-809-9669	41947	W-1717	REDUCER,TUBE	2
37	PAFZA	4820-01-492-0295	78462	ORI-10-65/225- H-1 1/8 ODF	VALVE,REGULATING,FLUID PRESSURE ..	1
38	MFFZZ		94833	150K0161-1	TUBE,COPPER 0.875 OD X 0.045 WALL, 26.38 IN LG, MAKE FROM COPPER TUBING, P/N ASTM-B280.....	1
39	PAFZZ	4730-00-814-8519	41947	W4035	TEE,TUBE	1
40	PAFZZ	4730-00-027-0773	97403	13216E6176-6	ELBOW,TUBE	2
41	XDFZZ		94833	500K1928-21	BOLT,HEX HEAD.....	5
42	MFFZZ		94833	151K0045	TUBE,COPPER 0.875 OD X 0.045 WALL, 32.40 IN LG, MAKE FROM COPPER TUBING, P/N ASTM-B280.....	1
43	PAFZZ	4720-00-116-7493	02795	12MBS-4141B- 111/2IN.	HOSE ASSEMBLY,METALLIC	1
44	MFFZZ		94833	150K0161-3	TUBE,COPPER 0.875 OD X 0.045 WALL, 3.75 IN LG, MAKE FROM COPPER TUBING, P/N ASTM-B280.....	1
45	PAFZZ	4730-00-813-3721	96906	MS35928-7U	ELBOW,TUBE	1
46	MFFZZ		94833	151K0047	TUBE,COPPER 0.375 OD X 0.032 WALL, 8.32 IN LG, MAKE FROM COPPER TUBING, P/N ASTM-B280.....	1
47	PAFZZ	4820-00-287-3325	28193	6263N	VALVE,GLOBE.	2
48	XBFZZ		94833	150K0098	BRACKET,HAND VALVE.....	1
49	AFFFF		94833	151K0048-1	TUBE,HANDVALVE TO STRAINER	1
50	PAFZZ	4730-00-189-2739	93061	14FSX-6	.NUT,TUBE COUPLING.....	1
51	MFFZZ		94833	151K0048-1/T	.TUBE,COPPER 0.375 OD X 0.032 WALL, 8.63 IN LG, MAKE FROM COPPER TUBING, P/N ASTM-B280.....	1
52	AFFFF		94833	151K0050-1	TUBE,STRAINER TO SOLENOID.....	1
53	PAFZZ	4730-00-189-2739	93061	14FSX-6	.NUT,TUBE COUPLING.....	2
54	MFFZZ		94833	151K0050-1/T	.TUBE,COPPER 0.375 OD X 0.032 WALL, 23.69 IN LG, MAKE FROM COPPER TUBING, P/N ASTM-B280.....	1
55	PAFZZ	5325-00-834-1789	96906	MS35489-118	GROMMET,NONMETALLIC.....	2
56	PAFZA	5940-01-091-2560	00779	42565-2	TERMINAL.	4
57	PAFZZ	5970-00-494-8284	00779	480053-3	INSULATOR,HOUSING	4
58	PAFZZ	4810-01-147-6802	78462	B9F2	VALVE,SOLENOID.	2
59	PAFZZ	4810-00-928-8927	78462	MKC-2	.PARTS KIT,SOLENOID VALVE (COIL ASSY W/JUNCTION BOX, INSTRUCTION SHEET).....	2

(1) ITEM NO.	(2) SMR CODE	(3) NSN	(4) CAGEC	(5) PART NUMBER	(6) DESCRIPTION AND USABLE ON CODE (UOC)	(7) QTY
60	MFFZZ		94833	150K0198-7	TUBE,COPPER 0.375 OD X 0.032 WALL, 2.88 IN LG, MAKE FROM COPPER TUBING, P/N ASTM-B280.....	1
61	PAFZZ	4730-00-189-2739	93061	14FSX-6	NUT,TUBE COUPLING.....	4
62	PAFZZ	4730-00-822-0615	41947	W1025	REDUCER,TUBE.....	1
63	PAFZZ	5340-01-148-3722	96906	MS21919WCG-6	CLAMP,LOOP.....	1
64	XDFZZ		94833	500K1928-24	BOLT,HEX HEAD.....	1
65	XDFZZ		97403	13226E0881-3	SLEEVE,SPACER.....	1
66	AFFFF		94833	151K0049-1	TUBE,SIGHT GLASS TO.....	1
67	PAFZZ	4730-00-189-2739	93061	14FSX-6	.NUT,TUBE COUPLING.....	1
68	MFFZZ		94833	151K0049-1/T	TUBE,COPPER 0.375 OD X 0.032 WALL, 18.47 IN LG, MAKE FROM COPPER TUBING, P/N ASTM-B280.....	1
69	PAFZZ	5325-00-276-6100	96906	MS35489-14	GROMMET,NONMETALLIC.....	1
70	PAFZZ	6680-00-426-8643	70255	AMI-1MM3	INDICATOR,SIGHT,LIQUID.....	1
71	MFFZZ		94833	150K0198-13	TUBE,COPPER 0.375 OD X 0.032 WALL, 6.25 IN LG, MAKE FROM COPPER TUBING, P/N ASTM-B280.....	1
72	MFFZZ		94833	150K0198-3	TUBE,COPPER 0.375 OD X 0.032 WALL, 2.00 IN LG, MAKE FROM COPPER TUBING, P/N ASTM-B280.....	1
73	MFFZZ		94833	150K0198-5	TUBE,COPPER 0.375 OD X 0.032 WALL, 2.25 IN LG, MAKE FROM COPPER TUBING, P/N ASTM-B280.....	1
74	PAFZZ	4730-00-278-6178	96906	MS35923-3	REDUCER,TUBE.....	1
75	AFFFF		94833	151K0051-1	TUBE,FILTER DRIER.....	1
76	PAFZZ	4730-00-228-0826	81343	J5138-010166BA	.NUT,TUBE COUPLING.....	1
77	MFFZZ		94833	151K0051-1/T	.TUBE,COPPER 0.500 OD X 0.032 WALL, 14.72 IN LG, MAKE FROM COPPER TUBING, P/N ASTM-B280.....	1
78	PAFZZ	4730-01-092-3835	07295	40570	CAP,TUBE.....	2
79	PAFZZ	4730-00-978-6746	41947	A-330	ADAPTER,STRAIGHT,PIPE.....	2
80	MFFZZ		94833	151K0000-1/179	INSULATION TUBE 1.125 ID X 0.500 WALL, MAKE FROM INSULATION, P/N MIL-P-15280-FORM T.....	1
81	MFFZZ		94833	151K0000-1/180	INSULATION TUBE 3.125 ID X 0.500 WALL, MAKE FROM INSULATION, P/N MIL-P-15280-FORM T.....	1
82	XDFZZ		96906	MS35920-17	REDUCER,COUPLING.....	1
83	PAFZZ	4730-00-235-4066	96906	MS35928-9	ELBOW,TUBE.....	3
84	MFFZZ		94833	150K0159-3	TUBE,COPPER 1.125 OD X 0.050 WALL, 4.00 IN LG, MAKE FROM COPPER TUBING, P/N ASTM-B280.....	1

(1) ITEM NO.	(2) SMR CODE	(3) NSN	(4) CAGEC	(5) PART NUMBER	(6) DESCRIPTION AND USABLE ON CODE (UOC)	(7) QTY
85	PAFZZ	5340-01-471-4306	70510	1010FY	MOUNT,RESILIENT,GENERAL PURPOSE REFRIGERATION HOSE.....	1
86	MFFZZ		94833	150K0159-11	TUBE,COPPER 1.125 OD X 0.050 WALL, 13.00 IN LG, MAKE FROM COPPER TUBING, P/N ASTM-B280.....	1
87	PAFZZ	4820-01-485-8747	70255	OPR-10-1 1/8 ODF -0-60	VALVE,REGULATING,FLUID PRESSURE ..	1
88	MFFZZ		94833	151K0043	TUBE,COPPER 1.125 OD X 0.050 WALL, 21.13 IN LG, MAKE FROM COPPER TUBING, P/N ASTM-B280.....	1
89	XDFZZ		97765	3700	RECEIVER,LIQUID REFRIGERANT	1
90	PAFZZ	5340-01-485-0689	97765	983-430	PLUG,FUSIBLE.....	1
91	XDFZZ		94833	500K1950-3	WASHER,LOCK.....	1
92	XBFZZ		94833	150K0047-1	CHANNEL,MOUNT,ACCUMULATOR	1
93	MFFZZ		94833	150K0196	TUBE,COPPER 1.125 OD X 0.050 WALL, 16.51 IN LG, MAKE FROM COPPER TUBING, P/N ASTM-B280.....	1

END OF FIGURE

UNIT, DIRECT SUPPORT AND GENERAL SUPPORT MAINTENANCE

REFRIGERATION UNIT, MECHANICAL, 10K BTU, ELECTRIC
MODEL F10000RE

REFRIGERATION SYSTEM
REFRIGERANT PIPING, EVAPORATOR SECTION

REPAIR PARTS LIST

9	12	19
10 AND 11	13 AND 14	20 AND 21

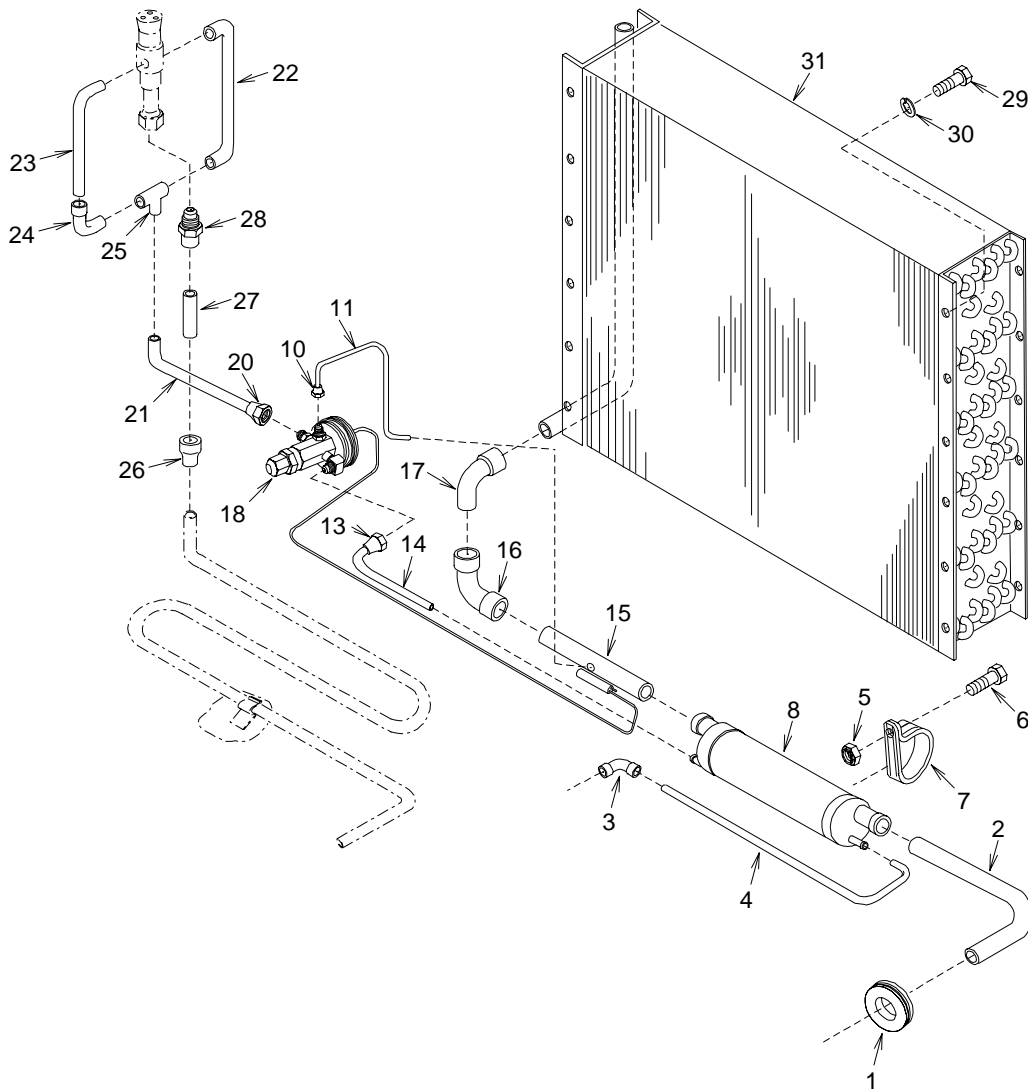


Figure 8. Refrigerant Piping, Evaporator Section

(1) ITEM NO.	(2) SMR CODE	(3) NSN	(4) CAGEC	(5) PART NUMBER	(6) DESCRIPTION AND USABLE ON CODE (UOC)	(7) QTY
GROUP 04 REFRIGERATION SYSTEM						
FIGURE 8 REFRIGERANT PIPING, EVAPORATOR SECTION						
1	PAFZZ	5325-00-515-9685	96906	MS35489-25	GROMMET, NONMETALLIC	1
2	MFFZZ		94833	150K0160	TUBE, COPPER 1.125 OD X 0.050 WALL, 22.75 IN LG, MAKE FROM COPPER TUBING, P/N ASTM-B280	1
3	XDFZZ		97403	13216E6190-2	ELBOW, TUBE	1
4	MFFZZ		94833	150K0202	TUBE, COPPER 0.375 OD X 0.032 WALL, 28.75 IN LG, MAKE FROM COPPER TUBING, P/N ASTM-B280	1
5	XDFZZ		94833	500K1927-3	NUT, SELF-LOCKING	1
6	XDFZZ		94833	500K1928-19	BOLT, HEX HEAD	1
7	PAFZZ	5340-00-842-2134	96906	MS21919WDG-46	CLAMP, LOOP	1
8	PAFZZ	4130-01-485-0699	97765	H300	HEAT INTERCHANGER, REFRIGERANT	1
9	AFFFF		94833	150K0203-1	TUBE, EXPANSION VALVE	1
10	PAFZZ	4730-00-189-2737	41947	A5051	.NUT, TUBE COUPLING	1
11	MFFZZ		94833	150K0203-1/T	.TUBE, COPPER 0.25 OD X 0.032 WALL, 10.27 IN LG, MAKE FROM COPPER TUBING, ASTM-B280	1
12	AFFFF		94833	150K0200-1	TUBE, INTERCHANGER	1
13	PAFZZ	4730-00-189-2739	93061	14FSX-6	.NUT, TUBE COUPLING	1
14	MFFZZ		94833	150K0200-1/T	.TUBE, COPPER 0.375 OD X 0.032 WALL, 6.60 IN LG, MAKE FROM COPPER TUBING, P/N ASTM-B280	1
15	MFFZZ		94833	150K0159-9	TUBE, COPPER 1.125 OD X 0.050 WALL, 7.50 IN LG, MAKE FROM COPPER TUBING, P/N ASTM-B280	1
16	PAFZZ	4730-00-995-2651	88216	A1557	ELBOW, TUBE	1
17	PAFZZ	4730-00-235-4066	96906	MS35928-9	ELBOW, TUBE	1
18	PAFZZ	4820-01-485-8754	70255	AFAE-1-MC-3/8 X 1/2SAE	VALVE, EXPANSION	1
19	AFFFF		94833	150K0187-1	TUBE, REDUCER TO EXPANSION	1
20	PAFZZ	4730-00-228-0826	81343	J5138-010166BA	.NUT, TUBE COUPLING	1
21	MFFZZ		94833	150K0187-1/T	.TUBE, COPPER 0.500 OD X 0.035 WALL, 7.34 IN LG, MAKE FROM COPPER TUBING, ASTM-B280	1
22	MFFZZ		94833	150K0145	TUBE, COPPER 0.50 OD X 0.035 WALL, 15.25 IN LG, MAKE FROM COPPER TUBING, ASTM-B280	1
23	MFFZZ		94833	150K0146	TUBE, COPPER 0.50 OD X 0.035 WALL, 12.53 IN LG, MAKE FROM COPPER TUBING, ASTM-B280	1
24	PAFZZ	4730-00-022-1334	96906	MS35928-4	ELBOW, TUBE	1
25	PAFZZ	4730-00-203-4921	41947	W-4015	TEE, TUBE	1
26	PAFZZ	4730-00-264-9171	96906	MS35923-5	REDUCER, TUBE	1
27	MFFZZ		94833	150K0197	TUBE, COPPER 0.625 OD X 0.035 WALL, 2.00 IN LG, MAKE FROM COPPER TUBING, ASTM-B280	1

(1) ITEM NO.	(2) SMR CODE	(3) NSN	(4) CAGEC	(5) PART NUMBER	(6) DESCRIPTION AND USABLE ON CODE (UOC)	(7) QTY
28	XDFZZ		41947	A-4439	COUPLING.....	1
29	XDFZZ		94833	500K1928-21	BOLT,HEX HEAD.....	12
30	XDFZZ		94833	500K1950-3	WASHER,LOCK.....	12
31	PAFZZ	4130-01-487-3064	OSN36	983923D	EVAPORATOR COIL,REFRIGERATION	1

END OF FIGURE

UNIT, DIRECT SUPPORT AND GENERAL SUPPORT MAINTENANCE

REFRIGERATION UNIT, MECHANICAL, 10K BTU, ELECTRIC
MODEL F10000RE

REFRIGERATION SYSTEM
PRESSURE SWITCHES

REPAIR PARTS LIST

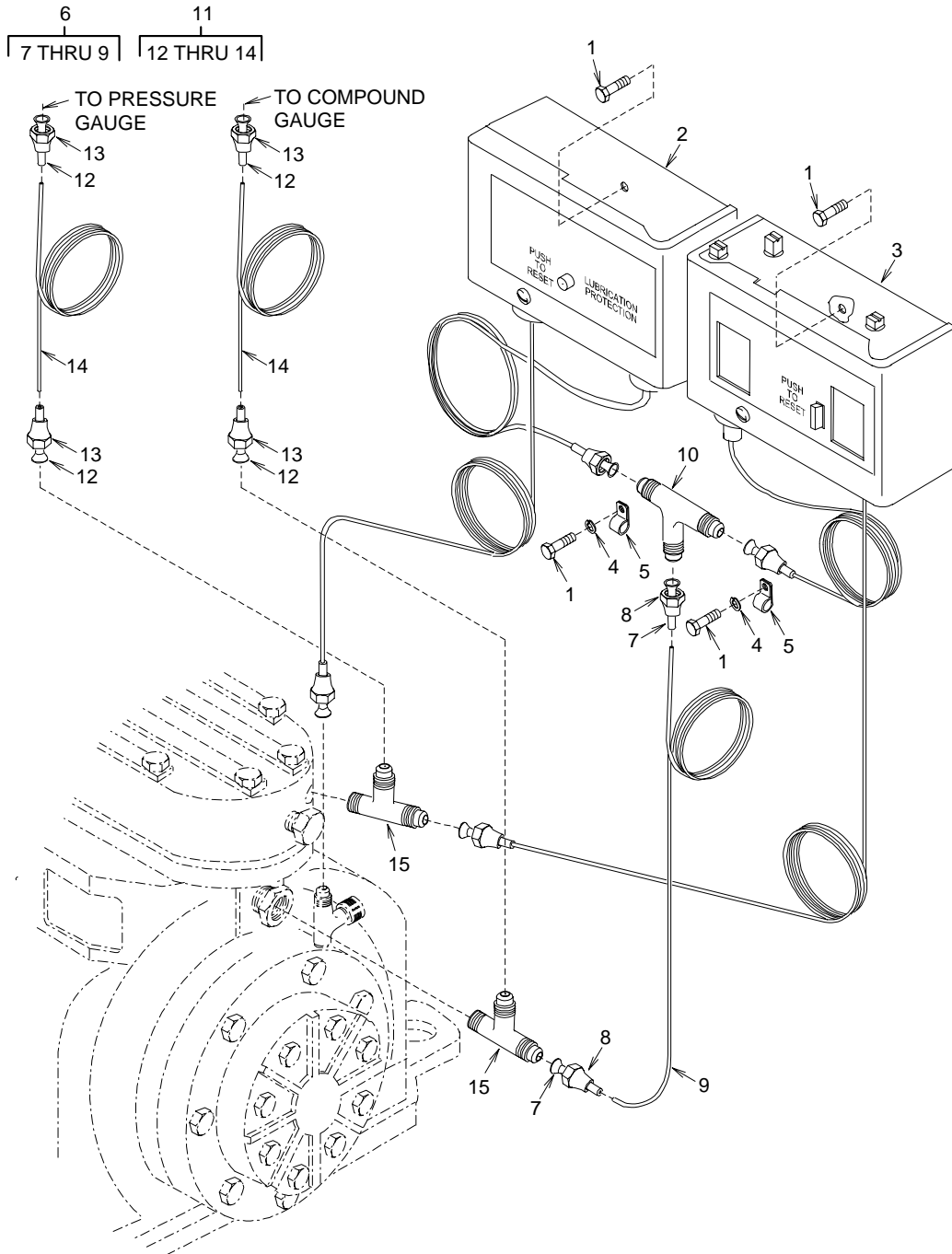


Figure 9. Pressure Switches

(1) ITEM NO.	(2) SMR CODE	(3) NSN	(4) CAGEC	(5) PART NUMBER	(6) DESCRIPTION AND USABLE ON CODE (UOC)	(7) QTY
GROUP 04 REFRIGERATION SYSTEM						
FIGURE 9 PRESSURE SWITCHES						
1	XDFZZ		94833	500K1928-19	BOLT,HEX HEAD.....	6
2	PAFZZ	4130-00-814-0450	50831	P45NCA-12	CONTROL,LUBE OIL PRESSURE	1
3	PAFZZ	5930-01-333-2411	92578	P70MA	SWITCH,PRESSURE.....	1
4	XDFZZ		94833	500K1950-3	WASHER,LOCK.....	2
5	PAFZZ	5340-00-291-5323	96906	MS21919WDG-4	CLAMP,LOOP.....	2
6	MFFFF		94833	150K0026-5	LINE,CAPILLARY.....	1
7	MFFZZ		94833	12076-3-1000	.TUBE,COPPER 0.25 OD X 0.030 WALL, 1.00 IN LG, MAKE FROM COPPER TUBING, P/N ASTM-B280.....	2
8	PAFZZ	4730-00-189-2737	41947	A5051	.NUT,TUBE COUPLING.....	2
9	MFFZZ		94833	150K0206-5/3	.TUBE,COPPER 0.125 OD X 0.030 WALL, 3.33 FT LG, MAKE FROM COPPER TUBING, P/N ASTM-B280.....	1
10	XDFZZ		41947	A-340	TEE,TUBE.....	1
11	AFFFF		94833	150K0026-1	LINE,CAPILLARY.....	2
12	MFFZZ		94833	12076-3-1000	.TUBE,COPPER 0.25 OD X 0.030 WALL, 1.00 IN LG, MAKE FROM COPPER TUBING, P/N ASTM-B280.....	4
13	PAFZZ	4730-00-189-2737	41947	A5051	.NUT,TUBE COUPLING.....	4
14	MFFZZ		94833	150K0206-1/3	.TUBE,COPPER 0.125 OD X 0.030 WALL, 9.00 FT LG, MAKE FROM COPPER TUBING, P/N ASTM-B280.....	2
15	PAFZZ	4730-00-268-3697	41947	A-127	TEE,PIPE TO TUBE.....	2

END OF FIGURE

UNIT, DIRECT SUPPORT AND GENERAL SUPPORT MAINTENANCE

REFRIGERATION UNIT, MECHANICAL, 10K BTU, ELECTRIC
MODEL F1000RE

REFRIGERATION SYSTEM
COMPRESSOR

REPAIR PARTS LIST

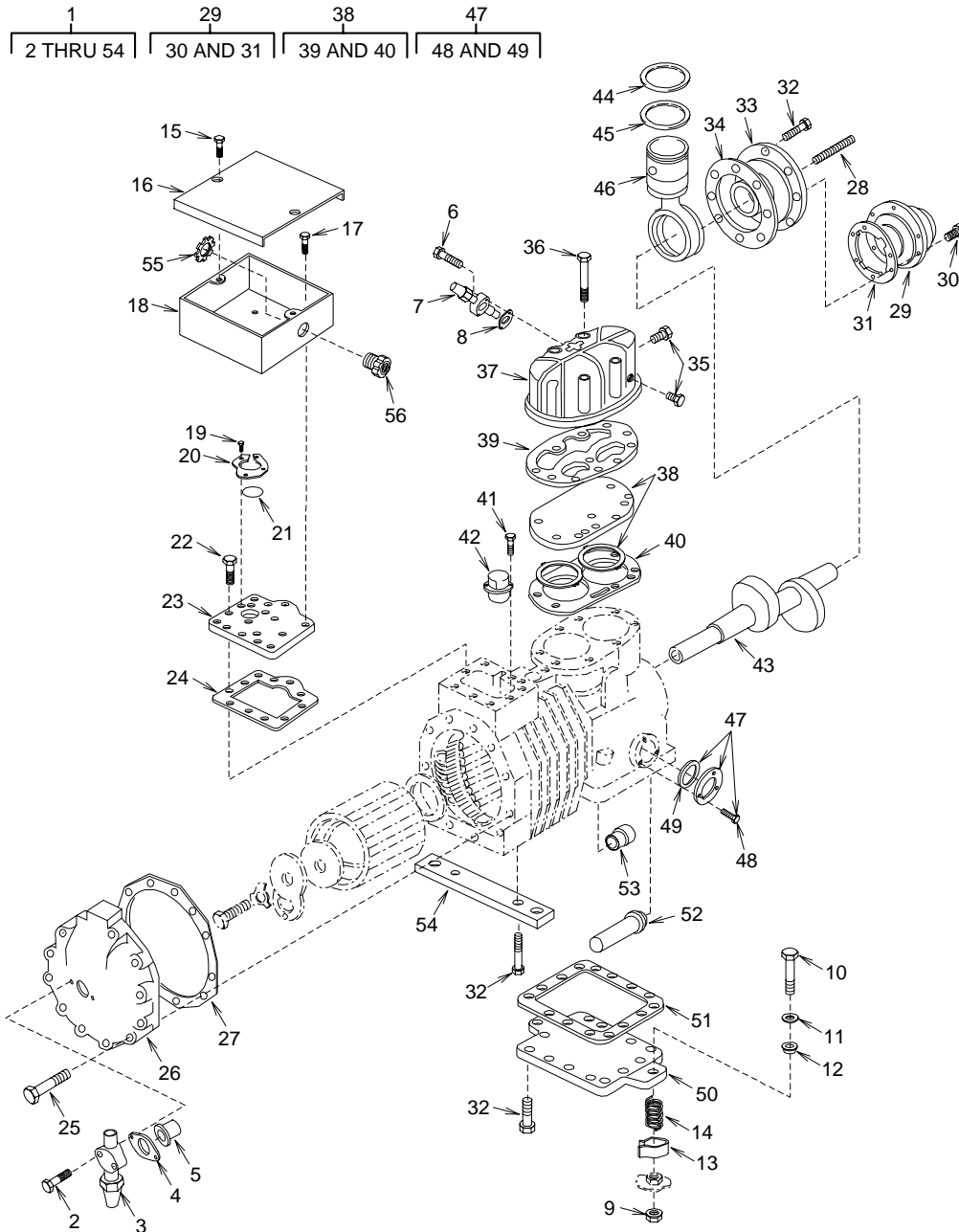


Figure 10. Compressor

(1) ITEM NO.	(2) SMR CODE	(3) NSN	(4) CAGEC	(5) PART NUMBER	(6) DESCRIPTION AND USABLE ON CODE (UOC)	(7) QTY
GROUP 04 REFRIGERATION SYSTEM						
FIGURE 10 COMPRESSOR						
1	PAFFF	4130-01-486-2928	14569	2DA3-060E-TFC -800	COMPRESSOR UNIT,REFRIGERATION ...	1
2	PAFZZ	5306-00-981-2573	14569	100-0013-19	.BOLT.....	2
3	PAFZZ	4820-00-289-9238	41947	A15085	.VALVE,ANGLE.....	1
4	PAFZZ	5330-01-278-9526	14569	020-0012-11	.GASKET.....	1
5	XDFZZ		14569	013-0078-00	.SCREEN,SUCTION.....	1
6	XDFZZ		14569	100-0013-49	.BOLT,MACHINE.....	2
7	PBFZZ	4820-01-485-1934	14569	510-0238-01	.VALVE,FLOW CONTROL.....	1
8	PAFZZ	5330-00-369-3464	14569	020-0012-09	.GASKET.....	1
9	XDFZZ		14569	101-0006-00	.LOCKNUT.....	4
10	XBFZZ		14569	100-0012-07	.SCREW,HEX HEAD, CAP.....	4
11	XDFZZ		94833	500K1926-8	.WASHER,FLAT.....	4
12	PAFZZ	5365-01-485-0522	14569	027-0192-00	.SPACER,SPECIAL SHAPE.....	4
13	XDFZZ		14569	074-0619-01	.BRACKET,SHIPPING.....	4
14	XDFZZ		14569	006-0012-02	.SPRING,COMPRESSOR.....	4
15	XBFZZ		14569	100-0180-02	.SCREW,HEX HEAD.....	2
16	XDFZZ		14569	505-0173-09	.COVER,TERMINAL ASSY.....	1
17	XDFZZ		14569	100-0063-02	.SCREW,ASSEMBLED WASHER	4
18	PAFZZ	5940-00-981-2568	14569	062-0058-00	.TERMINAL BOX.....	1
19	PAFZZ	5305-00-981-2570	14569	100-0013-02	.SCREW.....	3
20	XDFZZ		14569	521-0018-00	.PLATE.....	1
21	PBFZZ	5331-01-484-7302	14569	020-0844-00	.O-RING.....	1
22	XDFZZ		14569	100-0077-18	.SCREW,HEX HEAD.....	10
23	XDFZZ		14569	503-0346-01	.PLATE,TERMINAL GROUND	1
24	PAFZZ	5330-00-587-6405	14569	NR46-054	.GASKET.....	1
25	XDFZZ		14569	100-0012-26	.SCREW,HEX HEAD.....	16
26	XDFZZ		14569	005-0650-00	.COVER,STATOR.....	1
27	PAFZZ	5330-01-484-7314	14569	020-0709-00	.GASKET.....	1
28	XDFZZ		14569	103-0025-07	.STUD.....	2
29	XDFZZ		14569	509-0034-10	.PUMP,OIL GROUP.....	1
30	XBFZZ		14569	100-0013-20	.SCREW,HEX HEAD.....	6
31	PAFZZ	5330-01-276-5774	14569	020-0732-00	.GASKET.....	1
32	XDFZZ		14569	100-0182-02	.SCREW,HEX HEAD.....	27
33	XBFZZ		14569	505-0360-00	.COVER,HSG BRG ASSY.....	1
34	PAFZZ	5330-01-032-3353	14569	020-0104-00	.GASKET.....	1
35	XDFZZ		14569	036-0008-02	.PLUG.....	2
36	XBFZZ		14569	100-0062-52	.SCREW,HEX HEAD.....	8
37	XBFZZ		14569	002-0339-00	.HEAD,CYLINDER.....	1
38	PAFZZ	4130-01-485-7757	14569	503-0423-03	.VALVE PLATE,COMPRESSOR.....	1
39	PAFZZ	5330-01-484-7320	14569	020-0756-00	.GASKET.....	1

(1) ITEM NO.	(2) SMR CODE	(3) NSN	(4) CAGEC	(5) PART NUMBER	(6) DESCRIPTION AND USABLE ON CODE (UOC)	(7) QTY
40	PAFZZ	5330-01-484-7318	14569	020-0757-04	.GASKET.....	1
41	PAFZZ	5305-00-981-2578	14569	100-0028-04	.SCREW.....	2
42	XDFZZ		14569	071-0429-08	.PROTECTOR.....	1
43	XAFZZ		14569	007-0107-03	.CRANKSHAFT.....	1
44	XDFZZ		14569	025-0002-35	.RING PISTON.....	2
45	XDFZZ		14569	025-0088-35	.RING PISTON.....	2
46	XDFZZ		14569	504-0217-00	.PISTON,PIN & ROD.....	2
47	PAFZZ	6680-01-125-4514	14569	570-0020-00	.PARTS KIT,SIGHT INDICATOR	1
48	XDFZZ		14569	100-0028-05	.BOLT ASSEMBLY.....	3
49	XAFZZ		14569	020-0844-01	.SEAL.....	1
50	XDFZZ		14569	003-0099-00	.BOTTOM PLATE,COMPRESSOR	1
51	PAFZZ	5330-00-359-6272	14569	020-0159-00	.GASKET.....	1
52	XDFZZ		14569	013-0084-00	.SCREEN,STRAINER.....	1
53	PAFZZ	4820-00-980-1671	14569	510-0142-00	.VALVE,CHECK.....	1
54	XDFZZ		14569	003-0060-00	.FOOT,MOUNTING.....	1
55	PAFZZ	5975-00-642-7261	56501	142	LOCKNUT,ELECTRICAL.....	1
56	PAFZZ	5975-00-539-6912	59730	2535	BOX CONNECTOR,ELECTRICAL.....	1

END OF FIGURE

UNIT, DIRECT SUPPORT AND GENERAL SUPPORT MAINTENANCE

REFRIGERATION UNIT, MECHANICAL, 10K BTU, ELECTRIC
MODEL F10000RE

HOUSING
HEAT SHIELD FRAME

REPAIR PARTS LIST

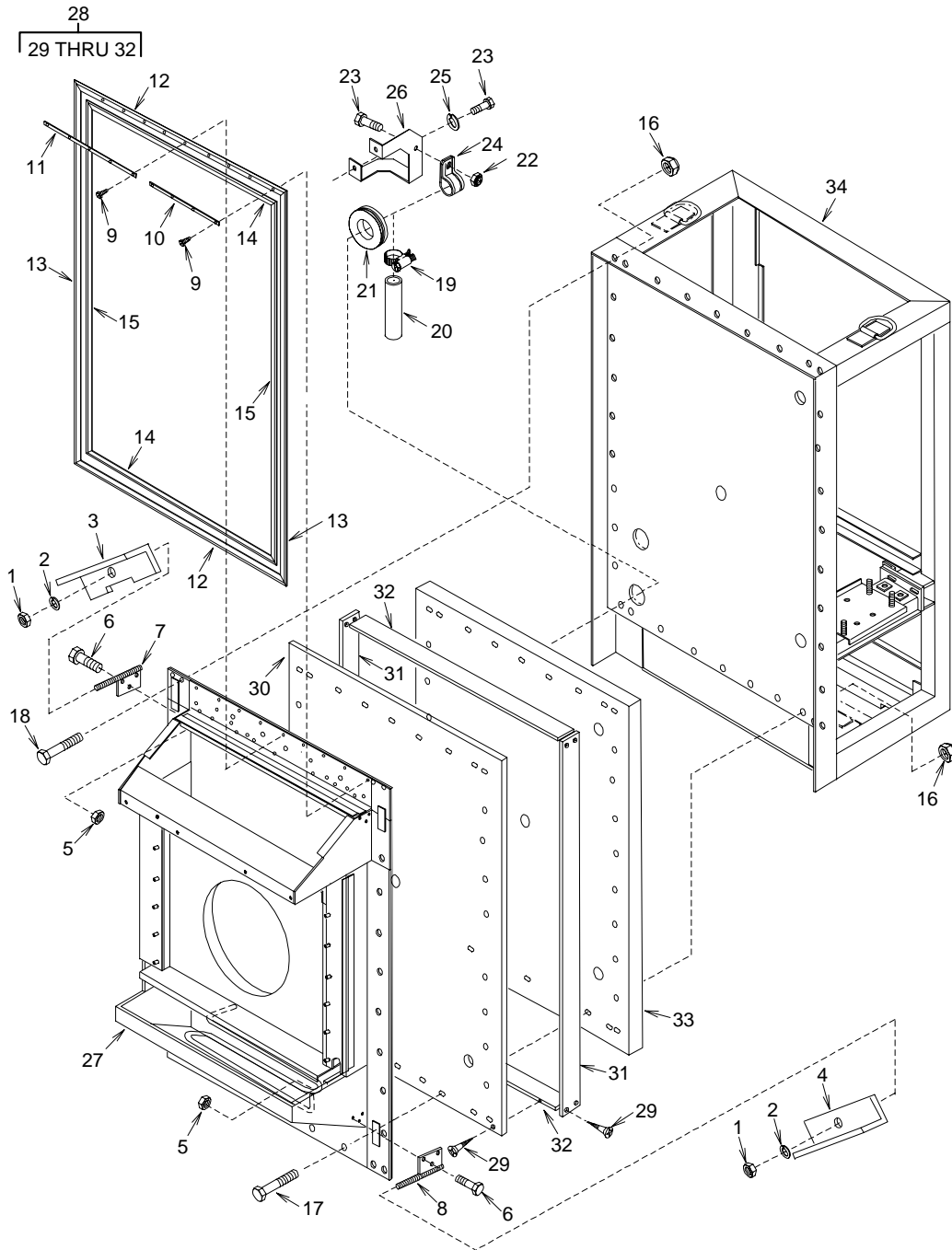


Figure 11. Heat Shield Frame

(1) ITEM NO.	(2) SMR CODE	(3) NSN	(4) CAGEC	(5) PART NUMBER	(6) DESCRIPTION AND USABLE ON CODE (UOC)	(7) QTY
GROUP 02 HOUSING						
FIGURE 11 HEAT SHIELD FRAME						
1	XDFZZ		94833	53578-12	NUT,PLAIN,HEX.....	4
2	XDFZZ		94833	500K1950-10	WASHER,LOCK.....	4
3	XDFZZ		94833	150K0204-1	ANGLE,UNIT MOUNTING.....	2
4	XDFZZ		94833	150K0204-3	ANGLE,UNIT MOUNTING.....	2
5	PAFZZ	5310-01-491-5386	94833	500K1927-6	NUT,SELF-LOCKING,HEAD	12
6	XDFZZ		94833	500K1928-58	BOLT,HEX HEAD.....	12
7	XDHZZ		94833	72948-1	MOUNT,UNIT.....	2
8	XDHZZ		94833	72948-2	MOUNT,UNIT.....	2
9	XDFZZ		96906	MS51850-54	SCREW,TAPPING.....	84
10	XDFZZ		94833	150K0168-1	STRIP,GASKET RETAINER	16
11	XDFZZ		94833	150K0168-3	STRIP,GASKET RETAINER	4
12	MFFZZ		94833	150K0171	GASKET, TOP & BOTTOM 43.75 IN LG, MAKE FROM GASKET, (74951)V-1234-25..	2
13	MFFZZ		94833	150K0170	GASKET,SIDE 62.06 IN LG, MAKE FROM GASKET, (74951)V-1234-25.....	2
14	MFFZZ		94833	150K0172	GASKET, TOP & BOTTOM 39.25 IN LG, MAKE FROM GASKET, (74951)V-1234-25....	2
15	MFFZZ		94833	150K0169	GASKET,SIDE 57.59 IN LG,MAKE FROM GASKET, (74951)V-1234-25.....	2
16	XDFZZ		94833	500K1927-4	NUT,SELF-LOCKING.....	34
17	XBFZZ		94833	53573-4-64	SCREW,HEX HEAD.....	30
18	XDFZZ		94833	53573-4-68	SCREW,HEX HEAD.....	4
19	PAFZZ	4730-00-908-3194	96906	MS35842-11	CLAMP,HOSE.....	1
20	MFFZZ		97403	13218E0001-305	TUBING,PLASTIC 0.75 ID X 0.125 WALL, 8 IN LG, MAKE FROM PLASTIC TUBING, P/N ZZ-T-831, TYPE VI, CLASS 6.....	1
21	XDFZZ		96906	MS35489-28	GROMMET, NONMETALLIC.....	1
22	XDFZZ		94833	500K1927-3	NUT,SELF-LOCKING.....	1
23	XDFZZ		94833	500K1928-19	BOLT,HEX HEAD.....	3
24	PAFZZ	5340-00-664-0584	96906	MS21919WDG30	CLAMP,LOOP.....	1
25	XDFZZ		94833	500K1950-3	WASHER,LOCK.....	2
26	XDFZZ		94833	150K0190-1	BRACKET,DEFROST TUBE.....	1
27	XDFZZ		94833	150K0011-1	HOUSING,EVAPORATOR.....	1
28	XDHHH		94833	150K0073-1	FRAME,HEAT SHIELD.....	1
29	XDHZZ		94833	53581-8-24	.SCREW,WOOD,FLAT HD.....	42
30	XDHZZ		94833	150K0074	.PANEL,HEAT SHIELD.....	1
31	XDHZZ		94833	150K0075-1	.BEAM,HEAT SHIELD.....	2
32	XDHZZ		94833	150K0075-3	.BEAM,HEAT SHIELD.....	2
33	XDFZZ		94833	150K0100	INSULATION,HEAT SHIELD	1
34	XDHHH		94833	151K0040-1	FRAME,CONDENSER.....	1

END OF FIGURE

UNIT, DIRECT SUPPORT AND GENERAL SUPPORT MAINTENANCE

REFRIGERATION UNIT, MECHANICAL, 10K BTU, ELECTRIC
MODEL F10000RE

BULK MATERIAL

REPAIR PARTS LIST

(1) ITEM NO.	(2) SMR CODE	(3) NSN	(4) CAGEC	(5) PART NUMBER	(6) DESCRIPTION AND USABLE ON CODE (UOC)	(7) QTY
GROUP 02 BULK MATERIAL						
FIGURE 12 BULK						
1	PAOZZ	6145-00-191-8403	92194	2171/1	BRAID,WIRE (81343)QQ-B-575.....	100
2	PAOZZ	6145-01-484-4081	94833	500K1915	CABLE,POWER,ELECTRICAL	1
3	XDOZZ		81346	ASTM-D10562A2 C2F 2-3/16	GASKET 0.1875 THK, 40 IN X 70 INCH SHEETS.....	V
4	PAOZZ	5970-00-812-2968	81343	M23053/5-102-0	INSULATION SLEEVING 1000 FT SPOOLS.....	1
5	PAOZZ	5970-00-814-2878	92194	FIT221 1/4WHITE	INSULATION SLEEVING 1000 FOOT SPOOLS	1
6	PAOZZ	5970-00-954-1624	81349	M23053/5-107-0	INSULATION SLEEVING 1000 FOOT SPOOLS.....	1
7	PAOZZ	5970-00-740-2971	81349	M23053/5-107-9	INSULATION SLEEVING 1000 FOOT SPOOLS.....	1
8	XDFZZ		81349	MIL-P-15280 T,1-1/8 ID	FORM INSULATION.....	1
9	XDOZZ		81349	MIL-P-15280 T,3-1/8 ID	FORM INSULATION.....	1
10	PAOZZ	9320-01-486-5215	94833	555K5004-2HN- 07- 21	RUBBER SHEET,CELLULAR 0.125 THK, 40 INCH X 70 INCH SHEETS.....	V
11	PAFZZ	5330-01-391-2800	74951	V-1234-25	SEAL,NONMETALLIC SPECIAL SHAPE...	100
12	PAFZZ	4710-00-768-3638	81346	ASTMB280-80	TUBE,METALLIC (81346)ASTM-B280, 0.125 OD X 0.030 WALL.....	250
13	PAFZZ	4710-01-434-0416	81346	ASTM-B280X0 .250	TUBE,METALLIC (81346)ASTM-B280, 0.250 OD X 0.030 WALL.....	250
14	PAFZZ	4710-00-277-5527	02413	800E2730	TUBE,METALLIC (81346)ASTM-B280, 0.375 OD X 0.032 WALL.....	350
15	PAFZZ	4710-00-424-2694	95535	55229	TUBE,METALLIC (81346)ASTM-B280, 0.500 OD X 0.30 WALL.....	450
16	PAFZZ	4710-00-277-4508	19207	8689211	TUBE,METALLIC (81346)ASTM-B280, 0.625 OD X 0.035 WALL.....	450

(1) ITEM NO.	(2) SMR CODE	(3) NSN	(4) CAGEC	(5) PART NUMBER	(6) DESCRIPTION AND USABLE ON CODE (UOC)	(7) QTY
17	PAFZZ	4710-00-277-4528	16236	CS4710-0004IM	TUBE,METALLIC (81346)ASTM-B280, 0.825 OD X 0.045 WALL.....	650
18	PAFZZ	4710-00-277-5533	27188	MH800E6574	TUBE,METALLIC (81346)ASTM-B280, 1.125 OD X 0.050 WALL.....	500
19	PAFZZ	4712-01-055-6987	97403	13218E0001-302	TUBING,NONMETALLIC.....	100
21	PAOZZ	6145-00-578-7514	81349	M5086/2-12-9	WIRE,ELECTRICAL 1000 FOOT SPOOLS...	1
20	PAOZZ	6145-00-578-7513	81349	M5086/2-10-9	WIRE,ELECTRICAL 1000 FOOT SPOOLS.....	1
22	PAOZZ	6145-00-578-6602	81349	M5086/2-18-9	WIRE,ELECTRICAL 1000 FOOT SPOOLS.....	1

END OF FIGURE

UNIT, DIRECT SUPPORT AND GENERAL SUPPORT MAINTENANCE

**REFRIGERATION UNIT, MECHANICAL, 10K BTU, ELECTRIC
MODEL F1000RE**

SPECIAL TOOLS LIST

There are no special tools required for the Refrigeration Unit, Mechanical, 10K BTU, Electric – Model F1000RE.

UNIT, DIRECT SUPPORT AND GENERAL SUPPORT MAINTENANCE

REFRIGERATION UNIT, MECHANICAL, 10K BTU, ELECTRIC
MODEL F1000RE

NATIONAL STOCK NUMBER INDEX

STOCK NUMBER	FIG.	ITEM	STOCK NUMBER	FIG.	ITEM
4730-00-022-1334	8	24		7	53
4730-00-027-0773	7	40		7	61
5305-00-066-7327	4	48		7	67
4730-00-090-0832	4	37	4730-00-189-2742	7	16
5310-00-094-3421	2	5	6145-00-191-8403	BULK	1
5940-00-113-9828	3	153	4730-00-203-4921	8	25
5940-00-114-1316	4	43	5940-00-204-8966	3	31
4720-00-116-7493	7	43		3	34
5310-00-121-8009	4	59		3	37
5930-00-126-3132	5	55	5940-00-204-8966	3	56
5940-00-143-4661	3	22		3	67
	3	40		3	75
5940-00-143-4771	3	27		3	78
	3	92		3	82
	3	96		3	103
	3	100		3	108
	3	123		3	113
5940-00-143-4774	3	16		3	116
	3	19		3	119
5940-00-143-4777	3	174		3	122
5940-00-143-4794	3	4		3	128
	3	7		3	131
	3	10		3	136
	3	24		3	139
	3	52		3	169
	3	142		3	173
	3	157	4730-00-228-0826	7	12
	3	160		7	76
	3	163		8	20
	3	166	4730-00-235-4066	7	83
	3	170		8	17
5975-00-156-3253	3	1	4730-00-264-9171	8	26
5325-00-174-5316	4	54	4730-00-268-3697	9	15
5325-00-174-9008	2	9	5305-00-273-5499	1	9
5325-00-174-9312	2	8	5325-00-276-6100	7	69
5975-00-189-0857	4	53	4710-00-277-4508	BULK	16
4730-00-189-2737	8	10	4710-00-277-4528	BULK	17
	9	8	4710-00-277-5527	BULK	14
	9	13	4710-00-277-5533	BULK	18
4730-00-189-2739	7	50	4730-00-278-6178	7	74

STOCK NUMBER	FIG.	ITEM	STOCK NUMBER	FIG.	ITEM
5920-00-281-0225	4	13	5320-00-932-1972	1	16
5340-00-286-9424	7	5		7	29
4820-00-287-3325	7	47	6240-00-939-7859	4	11
4820-00-289-9238	10	3	6685-00-948-0928	4	38
5340-00-291-5323	2	11	5310-00-993-1548	7	32
	9	5	4730-00-995-2651	8	16
5330-00-359-6272	10	51	5330-01-032-3353	10	34
5330-00-369-3464	10	8	4720-01-055-6987	BULK	19
4710-00-424-2694	BULK	15	5940-01-091-2560	5	1
6680-00-426-8643	7	70		6	4
5970-00-494-8284	5	2		7	56
	7	57	4730-01-092-3835	7	78
5970-00-494-8285	3	23	6210-01-098-3886	4	10
5970-00-494-8285	3	127	5930-01-099-9573	4	28
	3	135	5310-01-104-6677	6	5
5975-00-642-7261	4	52	5310-01-124-3099	7	33
5340-00-664-0584	5	8	6680-01-125-4514	10	47
5305-00-717-5593	10	55	4810-01-147-6802	7	58
			5340-01-148-3722	2	3
5975-00-727-5153	11	24		7	63
5970-00-740-2971	4	14	4730-01-153-7193	7	24
5325-00-754-2187	3	2			
4710-00-768-3638	BULK	7	5935-01-175-8417	4	34
4730-00-809-9669	5	23	5930-01-211-3339	5	3
5970-00-812-2968	BULK	12	5330-01-276-5774	10	31
	3	41	5330-01-278-9526	10	4
	3	64	5999-01-291-4103	4	16
	3	72	5930-01-333-2411	9	3
	3	107	5920-01-366-0796	4	15
4730-00-813-3721	7	36	5330-01-391-2800	BULK	11
4130-00-814-0450	BULK	4	4710-01-434-0416	BULK	13
5970-00-814-2878	7	45	5340-01-471-4306	7	85
4730-00-814-8519	9	2	6645-01-477-5316	4	27
4730-00-822-0615	BULK	4	4140-01-484-0644	6	19
5325-00-834-1789	7	39	4140-01-484-0649	6	30
	7	62	5365-01-484-3014	1	15
	4	31	5365-01-484-3015	1	11
6210-00-840-0848			6145-01-484-4481	BULK	2
5340-00-842-2134	7	55	6110-01-484-4674	4	20
	4	12	5331-01-484-7302	10	21
5320-00-903-6767	7	3	5330-01-484-7314	10	27
	8	7	5330-01-484-7318	10	40
4730-00-908-3194	4	55	5330-01-484-7320	10	39
4130-00-922-7083	5	13	9905-01-484-7604	7	30
6685-00-924-9434	11	19	5935-01-484-7746	4	30
	7	4	6645-01-484-9671	4	29
4810-00-928-8927	4	39	5340-01-484-9995	1	23
5320-00-932-1972			5340-01-485-0007	1	14
	7	59	5340-01-485-0010	1	24

STOCK NUMBER	FIG.	ITEM	STOCK NUMBER	FIG.	ITEM
3020-01-485-0024	6	2			
5340-01-485-0025	1	13			
5340-01-485-0029	1	19			
5365-01-485-0522	10	12			
4820-01-485-0527	7	18			
4820-01-485-0530	7	14			
5340-01-485-0689	7	23			
	7	90			
4130-01-485-0699	8	8			
4730-01-485-0721	7	7			
5340-01-485-1128	1	3			
5945-01-485-1175	4	25			
5340-01-485-1185	1	7			
5340-01-485-1194	1	8			
3130-01-485-1737	6	24			
4820-01-485-1934	10	7			
4130-01-485-7757	10	38			
4820-01-485-8747	7	87			
4820-01-485-8754	8	18			
5340-01-486-2051	1	10			
4820-01-492-0295	7	37			
9905-01-493-7629	4	56			
4130-01-486-2928	10	1			
5925-01-486-3185	4	9			
9320-01-486-5215	BULK	10			
3040-01-486-9368	6	31			
4130-01-487-3061	7	34			
4130-01-487-3064	8	31			
6685-01-491-3877	4	32			
6105-01-491-4763	6	9			
4130-01-491-5024	7	22			
5310-01-491-5382	6	23			
5310-01-491-5386	7	26			
	11	5			
5940-01-491-8499	5	12			
6110-01-483-2607	4	19			
5930-01-483-4018	4	47			
9905-01-493-8108	1	17			
9905-01-493-8109	7	31			
9905-01-493-8748	5	15			
9905-01-493-8749	5	14			

END OF WORKPAGE

UNIT, DIRECT SUPPORT AND GENERAL SUPPORT MAINTENANCE

REFRIGERATION UNIT, MECHANICAL, 10K BTU, ELECTRIC
MODEL F1000RE

PART NUMBER INDEX

CAGEC	PART NUMBER	STOCK NUMBER	FIG.	ITEM
81348	A-A-466/TYI-2.5L-FZ	5340-01-486-2051	1	10
58536	A-A-52160/A60	3030-00-529-0355	6	1
41947	A-127	4730-00-268-3697	9	15
41947	A-330	4730-00-978-6746	7	79
41947	A-340		9	10
41947	A-4439		8	28
98410	AA-832-06	5940-00-204-8966	3	31
70255	AFAE-1-MC-3/8 X 1/2SAE	4820-01-485-8754	8	18
70255	AMI-1MM3	6680-00-426-8643	7	70
27191	AN16DNOEB	6110-01-483-2607	4	19
81346	ASTM-B280X0.250	4710-01-434-0416	BULK	13
81346	ASTM-D10562A2C2F2-3/16		BULK	3
81346	ASTMB280-80	4710-00-768-3638	BULK	11
81343	AS25036-108		3	42
41947	A15085	4820-00-289-9238	10	3
88216	A1557	4730-00-995-2651	8	16
50831	A19AAD-25D	6685-01-491-3877	4	32
41947	A4622	4730-00-090-0832	4	37
41947	A5051	4730-00-189-2737	8	10
41947	A5051	4730-00-189-2737	9	8
41947	A5051	4730-00-189-2737	9	13
71176	BK34	3020-01-485-0024	6	2
71176	BK34	3020-01-485-0024	6	25
03743	BL75	5975-00-642-7261	4	52
78462	B9F2	4810-01-147-6802	7	58
98410	C-828-10	5940-00-143-4794	3	4
98410	C-828-10	5940-00-143-4794	3	10
98410	C-828-10	5940-00-143-4794	3	170
16236	CS4710-0004IM	4710-00-277-4528	BULK	17
01963	E13-00M	5930-00-126-2	5	22
97765	FC6	4730-01-485-0721	7	7
92194	FIT221 1/4WHITE	5970-00-814-2878	BULK	5
97765	H300	4130-01-485-0699	8	8
71176	ITA44		6	26
81343	J5138-010166BA	4730-00-228-0826	7	12
81343	J5138-010166BA	4730-00-228-0826	7	76
81343	J5138-010166BA	4730-00-228-0826	8	20
27188	MH800E6574	4710-00-277-5533	BULK	18
81349	MIL-P-15280 FORM T,1-1/8 ID		BULK	8

CAGEC	PART NUMBER	STOCK NUMBER	FIG.	ITEM
81349	MIL-P-15280 FORM T,3-1/8 ID		BULK	9
78462	MKC-2	4810-00-928-8927	7	59
96906	MS20066-257	5315-00-962-1473	6	28
96906	MS20659-130	5940-00-114-1316	4	43
96906	MS21919WCG-6	5340-01-148-3722	2	3
96906	MS21919WCG-6	5340-01-148-3722	7	63
96906	MS21919WCG-8		2	4
96906	MS21919WDG-14	5340-00-286-9424	7	5
96906	MS21919WDG-17		2	12
96906	MS21919WDG-30	5340-00-664-0584	11	24
96906	MS21919WDG-32	5340-00-579-9678	7	6
96906	MS21919WDG-4	5340-00-291-5323	2	11
96906	MS21919WDG-4	5340-00-291-5323	9	5
96906	MS21919WDG-46	5340-00-842-2134	7	3
96906	MS21919WDG-46	5340-00-842-2134	8	7
96906	MS21919WDG30		7	35
		5340-00-664-0584	11	24
96906	MS24662-5	5320-00-903-6767	4	55
96906	MS24662-5	5320-00-903-6767	5	13
96906	MS24693-C28	5305-00-066-7327	4	48
96906	MS24693-C30	5305-00-717-5593	4	14
96906	MS24693-C48		5	11
96906	MS24693-C53		4	41
96906	MS24693-C72		2	13
81343	MS25036-102	5940-00-204-8966	3	34
81343	MS25036-102	5940-00-204-8966	3	37
81343	MS25036-102	5940-00-204-8966	3	45
81343	MS25036-102	5940-00-204-8966	3	56
81343	MS25036-102	5940-00-204-8966	3	67
81343	MS25036-102	5940-00-204-8966	3	75
81343	MS25036-102	5940-00-204-8966	3	78
81343	MS25036-102	5940-00-204-8966	3	82
81343	MS25036-102	5940-00-204-8966	3	103
81343	MS25036-102	5940-00-204-8966	3	108
81343	MS25036-102	5940-00-204-8966	3	113
81343	MS25036-102	5940-00-204-8966	3	116
81343	MS25036-102	5940-00-204-8966	3	119
81343	MS25036-102	5940-00-204-8966	3	122
81343	MS25036-102	5940-00-204-8966	3	128
81343	MS25036-102	5940-00-204-8966	3	131
81343	MS25036-102	5940-00-204-8966	3	136
81343	MS25036-102	5940-00-204-8966	3	139
81343	MS25036-102	5940-00-204-8966	3	169
81343	MS25036-102	5940-00-204-8966	3	173

CAGEC	PART NUMBER	STOCK NUMBER	FIG.	ITEM
81343	MS25036-103	5940-00-143-4771	3	27
81343	MS25036-103	5940-00-143-4771	3	92
81343	MS25036-103	5940-00-143-4771	3	96
81343	MS25036-103	5940-00-143-4771	3	100
81343	MS25036-103	5940-00-143-4771	3	123
81343	MS25036-112	5940-00-143-4794	3	7
81343	MS25036-112	5940-00-143-4794	3	24
81343	MS25036-112	5940-00-143-4794	3	52
81343	MS25036-112	5940-00-143-4794	3	142
81343	MS25036-112	5940-00-143-4794	3	157
81343	MS25036-112	5940-00-143-4794	3	160
81343	MS25036-112	5940-00-143-4794	3	163
81343	MS25036-112	5940-00-143-4794	3	166
81343	MS25036-148	5940-00-113-9828	3	153
81343	MS25036-149	5940-00-557-1629	3	62
81343	MS25036-149	5940-00-557-1629	3	70
81343	MS25036-149	5940-00-557-1629	3	145
81343	MS25036-149	5940-00-557-1629	3	152
81343	MS25036-153	5940-00-143-4774	3	16
81343	MS25036-153	5940-00-143-4774	3	19
81343	MS25036-157	5940-00-143-4777	3	174
96906	MS25043-24DA	5935-01-175-8417	4	34
96906	MS27130-CR19K		2	17
96906	MS27130-CR19K		4	3
96906	MS27130-CR19K		4	58
96906	MS27130-S133K	5310-00-993-1548	7	32
96906	MS27130-S20K	5310-01-124-3099	7	33
96906	MS27211-2	6685-00-987-5600	4	36
96906	MS3367-2-9	5975-00-156-3253	3	1
96906	MS3367-4-9	5975-00-727-5153	3	2
96906	MS35489-118	5325-00-834-1789	4	31
96906	MS35489-118	5325-00-834-1789	7	55
96906	MS35489-123	5325-00-754-2187	5	23
96906	MS35489-14	5325-00-276-6100	7	69
96906	MS35489-15	5325-00-174-9008	2	9
96906	MS35489-2	5325-00-174-5316	4	54
96906	MS35489-25	5325-00-515-9685	8	1
96906	MS35489-28		11	21
96906	MS35489-36	5325-00-174-9312	2	8
96906	MS35842-11	4730-00-908-3194	11	19
96906	MS35845-3	4130-00-922-7083	7	4
96906	MS35872-5	4730-00-189-2742	7	16
96906	MS35920-17		7	82
96906	MS35923-3	4730-00-278-6178	7	74

CAGEC	PART NUMBER	STOCK NUMBER	FIG.	ITEM
96906	MS35923-5	4730-00-264-9171	8	26
96906	MS35928-4	4730-00-022-1334	8	24
96906	MS35928-7U	4730-00-813-3721	7	45
96906	MS35928-9	4730-00-235-4066	7	83
96906	MS35928-9	4730-00-235-4066	8	17
96906	MS51850-54		11	9
96906	MS51850-74	5305-00-273-5499	1	9
71400	MTH6	5920-00-281-0225	4	13
81343	M23053/5-102-0	5970-00-812-2968	BULK	4
81349	M23053/5-107-0	5970-00-954-1624	BULK	6
81349	M23053/5-107-9	5970-00-740-2971	BULK	7
81349	M24243/6-A402H	5320-00-932-1972	1	16
81349	M24243/6-A402H	5320-00-932-1972	7	29
81349	M5086/2-10-9	6145-00-578-7513	BULK	20
81349	M5086/2-12-9	6145-00-578-7514	BULK	21
81349	M5086/2-18-9	6145-00-578-6602	BULK	22
80205	NAS1329C06KB75	5310-00-121-8009	4	59
14569	NR46-054	5330-00-587-6405	10	24
70255	OPR-10-1 1/8 ODF-0-60	4820-01-485-8747	7	87
78462	ORI-10-65/225-H-1 1/8 ODF	4820-01-492-0295	7	37
71176	P1		6	27
50831	P45NCA-12	4130-00-814-0450	9	2
92578	P70MA	5930-01-333-2411	9	3
51107	QC-11	5935-01-484-7746	4	30
71400	S-8301-2	5920-01-366-0796	4	15
1HM04	TDF-220-AKB-24H	6645-01-484-9671	4	29
74951	V-1234-25	5330-01-391-2800	BULK	11
12697	VC10F-5K		3	155
41947	W-1717	4730-00-809-9669	7	36
41947	W-4015	4730-00-203-4921	8	25
41947	W1025	4730-00-822-0615	7	62
41947	W4035	4730-00-814-8519	7	39
01121	W60	5999-01-291-4103	4	16
14569	002-0339-00		10	37
14569	003-0060-00		10	54
14569	003-0099-00		10	50
14569	005-0650-00		10	26
14569	006-0012-02		10	14
14569	007-0107-03		10	43
14569	013-0078-00		10	5
14569	013-0084-00		10	52

CAGEC	PART NUMBER	STOCK NUMBER	FIG.	ITEM
14569	020-0012-09	5330-00-369-3464	10	8
14569	020-0012-11	5330-01-278-9526	10	4
14569	020-0104-00	5330-01-032-3353	10	34
14569	020-0159-00	5330-00-359-6272	10	51
14569	020-0709-00	5330-01-484-7314	10	27
14569	020-0732-00	5330-01-276-5774	10	31
14569	020-0756-00	5330-01-484-7320	10	39
14569	020-0757-04	5330-01-484-7318	10	40
14569	020-0844-00	5331-01-484-7302	10	21
14569	020-0844-01		10	49
14569	025-0002-35		10	44
14569	025-0088-35		10	45
14569	027-0192-00	5365-01-485-0522	10	12
14569	036-0008-02		10	35
14569	062-0058-00	5940-00-981-2568	10	18
14569	071-0429-08		10	42
14569	074-0619-01		10	13
14569	100-0012-07		10	10
14569	100-0012-26		10	25
14569	100-0013-02	5305-00-981-2570	10	19
14569	100-0013-19	5306-00-981-2573	10	2
14569	100-0013-20		10	30
14569	100-0013-49		10	6
14569	100-0028-04	5305-00-981-2578	10	41
14569	100-0028-05		10	48
14569	100-0062-52		10	36
14569	100-0063-02		10	17
14569	100-0077-18		10	22
14569	100-0180-02		10	15
14569	100-0182-02		10	32
14569	101-0006-00		10	9
70510	1010FY		7	85
14569	103-0025-07		10	28
61510	1085A27G02	6685-00-924-9434	4	39
02795	12MBS-4141B-111/ 2IN.	4720-00-116-7493	7	43
94833	120K1472	9905-01-493-7629	4	56
94833	120K1489	9905-01-493-8108	1	17
94833	120K1504-1	9905-01-493-8749	5	14
94833	120K1504-3	9905-01-493-8748	5	15
94833	120K1521		1	18
92966	120MB	6240-00-939-7859	4	11
94833	12076-3-1000		9	7

CAGEC	PART NUMBER	STOCK NUMBER	FIG.	ITEM
94833	12076-3-1000		9	12
83330	125-0410-1132-403	6210-00-840-0848	4	12
83330	125-1191-403	6210-01-098-3886	4	10
97403	13214E3789-4		1	25
97403	13216E6176-6	4730-00-027-0773	7	40
97403	13216E6190-2		8	3
97403	13216E6190-4	4730-01-153-7193	7	24
97403	13218E0001-302	4720-01-055-6987	BULK	19
97403	13218E0001-305		11	20
97403	13225E8194		4	24
97403	13226E0881-3		7	65
93061	14FSX-6	4730-00-189-2739	7	50
93061	14FSX-6	4730-00-189-2739	7	53
93061	14FSX-6	4730-00-189-2739	7	61
93061	14FSX-6	4730-00-189-2739	7	67
93061	14FSX-6	4730-00-189-2739	8	13
03743	141	5310-01-104-6677	6	5
56501	142	5975-00-642-7261	5	8
56501	142	5975-00-642-7261	10	55
94833	149K0018-3		5	7
94833	149K0020-1		5	16
94833	150K0011-1		11	27
94833	150K0026-1		9	11
94833	150K0026-5		9	6
94833	150K0036-1	5340-01-485-1194	1	8
94833	150K0038-1	5365-01-484-3015	1	11
94833	150K0047-1		7	92
94833	150K0073-1		11	28
94833	150K0074		11	30
94833	150K0075-1		11	31
94833	150K0075-3		11	32
94833	150K0083-1		7	28
94833	150K0092-1		1	28
94833	150K0098		7	48
94833	150K0100		11	33
94833	150K0101-1		6	17
94833	150K0113		7	10
94833	150K0121-1	5340-01-485-0010	1	24
94833	150K0127-1	5340-01-484-9995	1	23
94833	150K0133-1	5340-01-485-1128	1	3
94833	150K0136-1	5340-01-485-0025	1	13

CAGEC	PART NUMBER	STOCK NUMBER	FIG.	ITEM
94833	150K0136-2	5340-01-485-0007	1	14
94833	150K0144-4		2	7
94833	150K0145		8	22
94833	150K0146		8	23
94833	150K0154-1	5340-01-485-1185	1	7
94833	150K0159-11		7	86
94833	150K0159-3		7	84
94833	150K0159-9		8	15
94833	150K0160		8	2
94833	150K0161-1		7	38
94833	150K0161-3		7	44
94833	150K0168-1		11	10
94833	150K0168-3		11	11
94833	150K0169		11	15
94833	150K0170		11	13
94833	150K0171		11	12
94833	150K0172		11	14
94833	150K0173-1	5340-01-485-0029	1	19
94833	150K0175-1		1	21
94833	150K0175-3		1	22
94833	150K0175-5		1	20
94833	150K0180		1	26
94833	150K0183		4	35
94833	150K0187-1		8	19
94833	150K0187-1/T		8	21
94833	150K0190-1		11	26
94833	150K0196		7	93
94833	150K0197		8	27
94833	150K0198-13		7	71
94833	150K0198-3		7	72
94833	150K0198-5		7	73
94833	150K0198-7		7	60
94833	150K0200-1		8	12
94833	150K0200-1/T		8	14
94833	150K0201-1		4	42
94833	150K0201-1/1		4	45
94833	150K0201-1/3		4	44
94833	150K0202		8	4
94833	150K0203-1		8	9
94833	150K0203-1/T		8	11
94833	150K0204-1		11	3
94833	150K0204-3		11	4
94833	150K0206-1/3		9	14

CAGEC	PART NUMBER	STOCK NUMBER	FIG.	ITEM
94833	150K0206-5/3		9	9
94833	150K0207-1	5365-01-484-3014	1	15
94833	150K0228-1		6	18
94833	151K0000-1/179		7	80
94833	151K0000-1/180		7	81
94833	151K0000-1/204		5	20
94833	151K0000-1/205		5	21
94833	151K0009-1		2	14
94833	151K0009-1/54		4	23
94833	151K0010		4	51
94833	151K0017-1		4	57
94833	151K0018		4	6
94833	151K0020		4	33
94833	151K0021-1		3	3
94833	151K0021-1/1		3	5
94833	151K0021-10 TO 13		3	21
94833	151K0021-10/13		3	25
94833	151K0021-14		3	26
94833	151K0021-14/3		3	28
94833	151K0021-15		3	29
94833	151K0021-16		3	30
94833	151K0021-16/3		3	32
94833	151K0021-17		3	33
94833	151K0021-17/3		3	35
94833	151K0021-18		3	36
94833	151K0021-18/3		3	38
94833	151K0021-19 TO 22		3	39
94833	151K0021-19/14		3	43
94833	151K0021-2		3	6
94833	151K0021-2/1		3	8
94833	151K0021-23		3	44
94833	151K0021-23/3		3	46
94833	151K0021-24		3	47
94833	151K0021-24/3		3	49
94833	151K0021-25		3	50
94833	151K0021-25/3		3	53
94833	151K0021-26		3	54
94833	151K0021-26/3		3	57
94833	151K0021-27		3	58
94833	151K0021-27/3		3	60
94833	151K0021-28		3	61
94833	151K0021-28/3		3	65
94833	151K0021-29		3	66

CAGEC	PART NUMBER	STOCK NUMBER	FIG.	ITEM
94833	151K0021-29/3		3	68
94833	151K0021-3		3	9
94833	151K0021-3/1		3	11
94833	151K0021-30		3	69
94833	151K0021-30/3		3	73
94833	151K0021-31		3	74
94833	151K0021-31/3		3	76
94833	151K0021-32		3	77
94833	151K0021-32/3		3	79
94833	151K0021-33		3	80
94833	151K0021-33/3		3	83
94833	151K0021-34		3	84
94833	151K0021-34/3		3	86
94833	151K0021-35		3	87
94833	151K0021-35/3		3	89
94833	151K0021-36		3	90
94833	151K0021-36/3		3	93
94833	151K0021-37		3	94
94833	151K0021-37/3		3	97
94833	151K0021-38		3	98
94833	151K0021-38/3		3	101
94833	151K0021-39		3	102
94833	151K0021-39/3		3	104
94833	151K0021-4		3	12
94833	151K0021-40		3	105
94833	151K0021-40/3		3	109
94833	151K0021-41		3	110
94833	151K0021-41/3		3	114
94833	151K0021-42		3	115
94833	151K0021-42/3		3	117
94833	151K0021-43		3	118
94833	151K0021-43/3		3	120
94833	151K0021-44		3	121
94833	151K0021-44/3		3	124
94833	151K0021-45		3	125
94833	151K0021-45/3		3	129
94833	151K0021-46		3	130
94833	151K0021-46/3		3	132
94833	151K0021-47		3	133
94833	151K0021-47/3		3	137
94833	151K0021-48		3	138

CAGEC	PART NUMBER	STOCK NUMBER	FIG.	ITEM
94833	151K0021-48/3		3	140
94833	151K0021-49		3	141
94833	151K0021-49/1		3	143
94833	151K0021-5		3	13
94833	151K0021-50		3	144
94833	151K0021-50/3		3	147
94833	151K0021-51		3	148
94833	151K0021-51/3		3	150
94833	151K0021-52		3	156
94833	151K0021-52/17		3	158
94833	151K0021-53		3	159
94833	151K0021-53/17		3	161
94833	151K0021-54		3	162
94833	151K0021-54/17		3	164
94833	151K0021-55		3	165
94833	151K0021-55/17		3	167
94833	151K0021-56		3	168
94833	151K0021-56/17		3	171
94833	151K0021-57		3	172
94833	151K0021-57/17		3	175
94833	151K0021-6		3	14
94833	151K0021-7		3	15
94833	151K0021-7/2		3	17
94833	151K0021-8		3	18
94833	151K0021-8/2		3	20
94833	151K0028		4	49
94833	151K0030		4	4
94833	151K0031		4	5
94833	151K0032-1		6	13
94833	151K0037-1	3040-01-486-9368	6	31
94833	151K0038-1		6	12
94833	151K0040-1		11	34
94833	151K0042-1		3	151
94833	151K0042-1/4		3	154
94833	151K0043		7	88
94833	151K0044		7	25
94833	151K0045		7	42
94833	151K0046-1		7	15
94833	151K0046-1/T		7	17
94833	151K0047		7	46

CAGEC	PART NUMBER	STOCK NUMBER	FIG.	ITEM
94833	151K0048-1		7	49
94833	151K0048-1/T		7	51
94833	151K0049-1		7	66
94833	151K0049-1/T		7	68
94833	151K0050-1		7	52
94833	151K0050-1/T		7	54
94833	151K0051-1		7	75
94833	151K0051-1/T		7	77
94833	151K0052-1		7	11
94833	151K0052-1/T		7	13
94833	151K0096		4	50
94833	152K0118-1	5930-01-483-4018	4	47
94833	152K0189-1	6110-01-484-4674	4	20
89346	165565R1	5940-00-143-4661	3	22
89346	165565R1	5940-00-143-4661	3	40
14569	2DA3-060E-TFC-80 0	4130-01-486-2928	10	1
74400	20007	6645-01-477-5316	4	27
14859	20640L15-496-210 L45-2.10	5930-01-211-3339	5	3
92194	2171/1	6145-00-191-8403	BULK	1
56501	2523		6	6
56501	2535	5975-00-189-0857	4	53
		5975-00-539-6912	5	9
		5975-00-539-6912	10	56
97765	27035	4820-01-485-0530	7	14
97765	27036	4820-01-485-0527	7	18
97765	3391	4130-01-491-5024	7	22
97765	3700		7	89
81349	39TB2	5940-00-983-6122	4	46
07295	40570	4730-01-092-3835	7	78
00779	42282-2	5940-00-620-9780	3	63
00779	42282-2	5940-00-620-9780	3	71
00779	42282-2	5940-00-620-9780	3	106
00779	42282-2	5940-00-620-9780	3	111
00779	42282-2	5940-00-620-9780	3	126
00779	42282-2	5940-00-620-9780	3	134
00779	42565-2	5940-01-091-2560	5	1
00779	42565-2	5940-01-091-2560	6	4
00779	42565-2	5940-01-091-2560	7	56
00779	42565-2	5940-01-091-2560	3	59
00779	42565-2	5940-01-091-2560	3	81
00779	42565-2	5940-01-091-2560	3	85

CAGEC	PART NUMBER	STOCK NUMBER	FIG.	ITEM
00779	42565-2	5940-01-091-2560	3	88
00779	42565-2	5940-01-091-2560	3	91
00779	42565-2	5940-01-091-2560	3	95
00779	42565-2	5940-01-091-2560	3	99
00779	480053-3	5970-00-494-8284	5	2
00779	480053-3	5970-00-494-8284	6	3
00779	480053-3	5970-00-494-8284	7	57
00779	480054-3	5970-00-494-8285	3	23
00779	480054-3	5970-00-494-8285	3	41
00779	480054-3	5970-00-494-8285	3	64
00779	480054-3	5970-00-494-8285	3	72
00779	480054-3	5970-00-494-8285	3	107
00779	480054-3	5970-00-494-8285	3	112
00779	480054-3	5970-00-494-8285	3	127
00779	480054-3	5970-00-494-8285	3	135
81337	5-13-5421	9905-01-493-8109	7	31
94833	500K1857-1C	6685-00-948-0928	4	38
94833	500K1861-2	6105-01-491-4763	6	9
94833	500K1864-2	4140-01-484-0644	6	19
94833	500K1865-3	4140-01-484-0649	6	30
94833	500K1866	3130-01-485-1737	6	24
94833	500K1904-1	5945-01-485-1175	4	25
94833	500K1914-1	5925-01-486-3185	4	9
94833	500K1915	6145-01-484-4081	BULK	2
94833	500K1926-1		4	22
94833	500K1926-1		5	19
94833	500K1926-2		1	6
94833	500K1926-3		1	12
94833	500K1926-3		4	18
94833	500K1926-4		5	6
94833	500K1926-5		6	8
94833	500K1926-5		7	20
94833	500K1926-6	5310-01-491-5382	6	23
94833	500K1926-8		10	11
94833	500K1927-1		4	26
94833	500K1927-1		5	17
94833	500K1927-2		4	40
94833	500K1927-2		5	10
94833	500K1927-3		1	27
94833	500K1927-3		2	1
94833	500K1927-3		7	1

CAGEC	PART NUMBER	STOCK NUMBER	FIG.	ITEM
94833	500K1927-3		8	5
94833	500K1927-3		11	22
94833	500K1927-4		11	16
94833	500K1927-5		6	7
94833	500K1927-5		7	19
94833	500K1927-6	5310-01-491-5386	7	26
94833	500K1927-6	5310-01-491-5386	11	5
94833	500K1927-21		2	2
94833	500K1928-1		4	7
94833	500K1928-13		1	4
94833	500K1928-19		2	6
94833	500K1928-19		2	15
94833	500K1928-19		4	1
94833	500K1928-19		7	2
94833	500K1928-19		8	6
94833	500K1928-19		9	1
94833	500K1928-19		11	23
94833	500K1928-21		1	1
94833	500K1928-21		7	41
94833	500K1928-21		8	29
94833	500K1928-24		7	64
94833	500K1928-28		5	4
94833	500K1928-28		6	16
94833	500K1928-28		7	8
94833	500K1928-30		6	14
94833	500K1928-44		6	10
94833	500K1928-45		7	21
94833	500K1928-5		4	21
94833	500K1928-58		6	29
94833	500K1928-58		7	27
94833	500K1928-58		11	6
94833	500K1928-59		6	21
94833	500K1928-8		5	18
94833	500K1948	9905-01-484-7604	7	30
94833	500K1950-1		4	8
94833	500K1950-10		11	2
94833	500K1950-2		1	5
94833	500K1950-3		1	2
94833	500K1950-3		2	10
94833	500K1950-3		2	16
94833	500K1950-3		4	2
94833	500K1950-3		7	9
94833	500K1950-3		7	91
94833	500K1950-3		8	30
94833	500K1950-3		9	4

CAGEC	PART NUMBER	STOCK NUMBER	FIG.	ITEM
94833	500K1950-3		11	25
94833	500K1950-4		5	5
94833	500K1950-4		6	15
94833	500K1950-5		6	11
94833	500K1950-6		6	22
94833	500K2022	5940-01-491-8499	5	12
78189	501P10080000AMB	5310-00-094-3421	2	5
14569	503-0346-01		10	23
14569	503-0423-03	4130-01-485-7757	10	38
14569	504-0217-00		10	46
14569	505-0173-09		10	16
14569	505-0360-00		10	33
14569	509-0034-10		10	29
14569	510-0142-00	4820-00-980-1671	10	53
14569	510-0238-01	4820-01-485-1934	10	7
14569	521-0018-00		10	20
94833	53573-4-64		11	17
94833	53573-4-68		11	18
94833	53575-10-8		4	17
94833	53578-12		11	1
94833	53581-8-24		11	29
95535	55229	4710-00-424-2694	BULK	14
94833	555K5004-2HN-07-21	9320-01-486-5215	BULK	9
14569	570-0020-00	6680-01-125-4514	10	47
97384	58313-40189-3		6	20
28193	6263N	4820-00-287-3325	7	47
94833	72948-1		11	7
94833	72948-2		11	8
02413	800E2730	4710-00-277-5527	BULK	13
16004	82898		3	51
16004	82898		3	146
16004	82898		3	149
81640	8500K9	5930-01-099-9573	4	28
19207	8689211	4710-00-277-4508	BULK	15
0A400	980095 3CZ0603B	4130-01-487-3061	7	34
97765	983-430	5340-01-485-0689	7	23
97765	983-430	5340-01-485-0689	7	90
0SN36	983923D	4130-01-487-3064	8	31

By Order of the Secretary of the Army:

Official:



JOEL B. HUDSON

*Administrative Assistant to the
Secretary of the Army*

0318804

PETER J. SCHOOMAKER
*General, United States Army
Chief of Staff*

DISTRIBUTION:

To be distributed in accordance with initial distribution IDN 256777, requirements for
TM 9-4110-256-24P.

These are the instructions for sending an electronic 2028

The following format must be used if submitting an electronic 2028. The subject line must be exactly the same and all fields must be included; however only the following fields are mandatory: 1, 3, 4, 5, 6, 7, 8, 9, 10, 13, 15, 16, 17, and 27.

From: •Whomever" <whomever@avma27.army.mil>
To: amssbriml@natick.army.mil

Subject: DA Form 2028

1. From: Joe Smith
2. Unit: home
3. Address: 4300 Park
4. City: Hometown
5. St: MO
6. Zip: 77777
7. Date Sent: 19-OCT-93
8. Pub no: 55-2840-229-23
9. Pub Title: TM
10. Publication Date: 04-JUL-85
11. Change Number: 7
12. Submitter Rank: MSG
13. Submitter FName: Joe
14. Submitter MName: T
15. Submitter LName: Smith
16. Submitter Phone: 123-123-1234
17. Problem: 1
18. Page: 2
19. Paragraph: 3
20. Line: 4
21. NSN: 5
22. Reference: 6
23. Figure: 7
24. Table: 8
25. Item: 9
26. Total: 123
27. Text:

This is the text for the problem below line 27.

RECOMMENDED CHANGES TO PUBLICATIONS AND BLANK FORMS For use of this form, see AR 25-30; the proponent agency is ODISC4.						Use Part II (<i>reverse</i>) for Repair Parts and Special Tool Lists (RPSTL) and Supply Catalogs/Supply Manuals (SC/SM).	DATE <i>21 October 2003</i>
TO: (<i>Forward to proponent of publication or form</i>) (<i>Include ZIP Code</i>) Commander U.S. Army Tank-automotive and Armament Command ATTN: AMSTA-LC-CECT 15 Kansas Street Natick, MA 01760-5052						FROM: (<i>Activity and location</i>) (<i>Include ZIP Code</i>) <i>PFC Jane Doe</i> <i>CO A 3rd Engineer BR</i> <i>Ft. Leonardwood, MO 63108</i>	
PART I – ALL PUBLICATIONS (EXCEPT RPSTL AND SC/SM) AND BLANK FORMS							
PUBLICATION/FORM NUMBER TM 10-1670-296-23&P				DATE 30 October 2002	TITLE Unit Manual for Ancillary Equipment for Low Velocity Air Drop Systems		
ITEM NO.	PAGE NO.	PARA-GRAPH	LINE NO. *	FIGURE NO.	TABLE NO.	RECOMMENDED CHANGES AND REASON <i>(Provide exact wording of recommended changes, if possible).</i>	
	0036 00-2				1	<i>In table 1, Sewing Machine Code Symbols, the second sewing machine code symbol should be MD ZZ not MD 22.</i> <i>Change the manual to show Sewing Machine, Industrial: Zig-Zag; 308 stitch; medium-duty; NSN 3530-01-181-1421 as a MD ZZ code symbol.</i>	
<i>*Reference to line numbers within the paragraph or subparagraph.</i>							
TYPED NAME, GRADE OR TITLE Jane Doe, PFC				TELEPHONE EXCHANGE/AUTOVON, PLUS EXTENSION 508-233-4141		SIGNATURE Jane Doe <i>Jane Doe</i>	

TO: <i>(Forward direct to addressee listed in publication)</i> Commander U.S. Army Tank-automotive and Armament Command ATTN: AMSTA-LC-CECT 15 Kansas Street Natick, MA 01760-5052	FROM: <i>(Activity and location) (Include ZIP Code)</i> <i>PFC Jane Doe</i> <i>CO A 3rd Engineer BR</i> <i>Ft. Leonardwood, MO 63108</i>	DATE 21 October 2003
--	---	--------------------------------

PART II – REPAIR PARTS AND SPECIAL TOOL LISTS AND SUPPLY CATALOGS/SUPPLY MANUALS

PUBLICATION NUMBER TM 10-1670-296-23&P	DATE 30 October 2002	TITLE Unit Manual for Ancillary Equipment for Low Velocity Air Drop Systems
--	--------------------------------	---

PAGE NO.	COLM NO.	LINE NO.	NATIONAL STOCK NUMBER	REFERENCE NO.	FIGURE NO.	ITEM NO.	TOTAL NO. OF MAJOR ITEMS SUPPORTED	RECOMMENDED ACTION
0066 00-1					4			<i>Callout 16 in figure 4 is pointed to a <u>D-Ring</u>. In the Repair Parts List key for figure 4, item 16 is called a <u>Snap Hook</u>. Please correct one or the other.</i>

SAMPLE

PART III – REMARKS *(Any general remarks or recommendations, or suggestions for improvement of publications and blank forms. Additional blank sheets may be used if more space is needed.)*

TYPED NAME, GRADE OR TITLE	TELEPHONE EXCHANGE/AUTOVON, PLUS EXTENSION	SIGNATURE
----------------------------	--	-----------

RECOMMENDED CHANGES TO PUBLICATIONS AND BLANK FORMS						Use Part II (reverse) for Repair Parts and Special Tool Lists (RPSTL) and Supply Catalogs/Supply Manuals (SC/SM).	DATE
For use of this form, see AR 25-30; the proponent agency is ODISC4.							
TO: (Forward to proponent of publication or form) (Include ZIP Code) Commander U.S. Army Tank-automotive and Armament Command ATTN: AMSTA-LC-CECT 15 Kansas Street, Natick, MA 01760-5052.						FROM: (Activity and location) (Include ZIP Code)	
PART I – ALL PUBLICATIONS (EXCEPT RPSTL AND SC/SM) AND BLANK FORMS							
PUBLICATION/FORM NUMBER TM 9-4110-256-24P				DATE 31 August 2003		TITLE Unit, Direct Support, and General Support Maintenance Repair Parts and Special Tools List for the Refrigeration Unit, Mechanical, 10K BTU, Electric Model F10000RE	
ITEM NO.	PAGE NO.	PARA-GRAPH	LINE NO. *	FIGURE NO.	TABLE NO.	RECOMMENDED CHANGES AND REASON <i>(Provide exact wording of recommended changes, if possible).</i>	
<i>*Reference to line numbers within the paragraph or subparagraph.</i>							
TYPED NAME, GRADE OR TITLE				TELEPHONE EXCHANGE/AUTOVON, PLUS EXTENSION		SIGNATURE	

TO: <i>(Forward direct to addressee listed in publication)</i> Commander U.S. Army Tank-automotive and Armament Command ATTN: AMSTA-LC-CECT 15 Kansas Street, Natick, MA 01760-5052.	FROM: <i>(Activity and location) (Include ZIP Code)</i>	DATE
---	--	-------------

PART II – REPAIR PARTS AND SPECIAL TOOL LISTS AND SUPPLY CATALOGS/SUPPLY MANUALS

PUBLICATION NUMBER TM 9-4110-256-24P	DATE 31 August 2003	TITLE Unit, Direct Support, and General Support Maintenance Repair Parts and Special Tools List for the Refrigeration Unit, Mechanical, 10K BTU, Electric Model F10000RE
---	------------------------	--

PAGE NO.	COLM NO.	LINE NO.	NATIONAL STOCK NUMBER	REFERENCE NO.	FIGURE NO.	ITEM NO.	TOTAL NO. OF MAJOR ITEMS SUPPORTED	RECOMMENDED ACTION

PART III – REMARKS *(Any general remarks or recommendations, or suggestions for improvement of publications and blank forms. Additional blank sheets may be used if more space is needed.)*

TYPED NAME, GRADE OR TITLE	TELEPHONE EXCHANGE/AUTOVON, PLUS EXTENSION	SIGNATURE
----------------------------	--	-----------

RECOMMENDED CHANGES TO PUBLICATIONS AND BLANK FORMS						Use Part II (reverse) for Repair Parts and Special Tool Lists (RPSTL) and Supply Catalogs/Supply Manuals (SC/SM).	DATE
For use of this form, see AR 25-30; the proponent agency is ODISC4.							
TO: (Forward to proponent of publication or form) (Include ZIP Code) Commander U.S. Army Tank-automotive and Armament Command ATTN: AMSTA-LC-CECT 15 Kansas Street, Natick, MA 01760-5052.						FROM: (Activity and location) (Include ZIP Code)	
PART I – ALL PUBLICATIONS (EXCEPT RPSTL AND SC/SM) AND BLANK FORMS							
PUBLICATION/FORM NUMBER TM 9-4110-256-24P				DATE 31 August 2003		TITLE Unit, Direct Support, and General Support Maintenance Repair Parts and Special Tools List for the Refrigeration Unit, Mechanical, 10K BTU, Electric Model F10000RE	
ITEM NO.	PAGE NO.	PARA-GRAPH	LINE NO. *	FIGURE NO.	TABLE NO.	RECOMMENDED CHANGES AND REASON (Provide exact wording of recommended changes, if possible).	
<i>*Reference to line numbers within the paragraph or subparagraph.</i>							
TYPED NAME, GRADE OR TITLE				TELEPHONE EXCHANGE/AUTOVON, PLUS EXTENSION		SIGNATURE	

TO: <i>(Forward direct to addressee listed in publication)</i> Commander U.S. Army Tank-automotive and Armament Command ATTN: AMSTA-LC-CECT 15 Kansas Street, Natick, MA 01760-5052.	FROM: <i>(Activity and location) (Include ZIP Code)</i>	DATE
---	--	-------------

PART II – REPAIR PARTS AND SPECIAL TOOL LISTS AND SUPPLY CATALOGS/SUPPLY MANUALS

PUBLICATION NUMBER TM 9-4110-256-24P	DATE 31 August 2003	TITLE Unit, Direct Support, and General Support Maintenance Repair Parts and Special Tools List for the Refrigeration Unit, Mechanical, 10K BTU, Electric Model F10000RE
---	------------------------	--

PAGE NO.	COLM NO.	LINE NO.	NATIONAL STOCK NUMBER	REFERENCE NO.	FIGURE NO.	ITEM NO.	TOTAL NO. OF MAJOR ITEMS SUPPORTED	RECOMMENDED ACTION

PART III – REMARKS *(Any general remarks or recommendations, or suggestions for improvement of publications and blank forms. Additional blank sheets may be used if more space is needed.)*

TYPED NAME, GRADE OR TITLE	TELEPHONE EXCHANGE/AUTOVON, PLUS EXTENSION	SIGNATURE
----------------------------	--	-----------

RECOMMENDED CHANGES TO PUBLICATIONS AND BLANK FORMS						Use Part II (reverse) for Repair Parts and Special Tool Lists (RPSTL) and Supply Catalogs/Supply Manuals (SC/SM).	DATE
For use of this form, see AR 25-30; the proponent agency is ODISC4.							
TO: (Forward to proponent of publication or form) (Include ZIP Code) Commander U.S. Army Tank-automotive and Armament Command ATTN: AMSTA-LC-CECT 15 Kansas Street, Natick, MA 01760-5052.						FROM: (Activity and location) (Include ZIP Code)	
PART I – ALL PUBLICATIONS (EXCEPT RPSTL AND SC/SM) AND BLANK FORMS							
PUBLICATION/FORM NUMBER TM 9-4110-256-24P				DATE 31 August 2003		TITLE Unit, Direct Support, and General Support Maintenance Repair Parts and Special Tools List for the Refrigeration Unit, Mechanical, 10K BTU, Electric Model F10000RE	
ITEM NO.	PAGE NO.	PARA-GRAPH	LINE NO. *	FIGURE NO.	TABLE NO.	RECOMMENDED CHANGES AND REASON <i>(Provide exact wording of recommended changes, if possible).</i>	
<i>*Reference to line numbers within the paragraph or subparagraph.</i>							
TYPED NAME, GRADE OR TITLE				TELEPHONE EXCHANGE/AUTOVON, PLUS EXTENSION		SIGNATURE	

TO: <i>(Forward direct to addressee listed in publication)</i> Commander U.S. Army Tank-automotive and Armament Command ATTN: AMSTA-LC-CECT 15 Kansas Street, Natick, MA 01760-5052.	FROM: <i>(Activity and location) (Include ZIP Code)</i>	DATE
---	--	-------------

PART II – REPAIR PARTS AND SPECIAL TOOL LISTS AND SUPPLY CATALOGS/SUPPLY MANUALS

PUBLICATION NUMBER TM 9-4110-256-24P	DATE 31 August 2003	TITLE Unit, Direct Support, and General Support Maintenance Repair Parts and Special Tools List for the Refrigeration Unit, Mechanical, 10K BTU, Electric Model F10000RE
---	------------------------	--

PAGE NO.	COLM NO.	LINE NO.	NATIONAL STOCK NUMBER	REFERENCE NO.	FIGURE NO.	ITEM NO.	TOTAL NO. OF MAJOR ITEMS SUPPORTED	RECOMMENDED ACTION

PART III – REMARKS *(Any general remarks or recommendations, or suggestions for improvement of publications and blank forms. Additional blank sheets may be used if more space is needed.)*

TYPED NAME, GRADE OR TITLE	TELEPHONE EXCHANGE/AUTOVON, PLUS EXTENSION	SIGNATURE
----------------------------	--	-----------

The Metric System and Equivalents

Linear Measure

1 centimeter = 10 millimeters = .39 inch
 1 decimeter = 10 centimeters = 3.94 inches
 1 meter = 10 decimeters = 39.37 inches
 1 dekameter = 10 meters = 32.8 feet
 1 hectometer = 10 dekameters = 328.08 feet
 1 kilometer = 10 hectometers = 3,280.8 feet

Weights

1 centigram = 10 milligrams = .15 grain
 1 decigram = 10 centigrams = 1.54 grains
 1 gram = 10 decigrams = .035 ounce
 1 dekagram = 10 grams = .35 ounce
 1 hectogram = 10 dekagrams = 3.52 ounces
 1 kilogram = 10 hectograms = 2.2 pounds
 1 quintal = 100 kilograms = 220.46 pounds
 1 metric ton = 10 quintals = 1.1 short tons

Liquid Measure

1 centiliter = 10 milliliters = .34 fl. ounce
 1 deciliter = 10 centiliters = 3.38 fl. ounces
 1 liter = 10 deciliters = 33.81 fl. ounces
 1 dekaliter = 10 liters = 2.64 gallons
 1 hectoliter = 10 dekaliters = 26.42 gallons
 1 kiloliter = 10 hectoliters = 264.18 gallons

Square Measure

1 sq. centimeter = 100 sq. millimeters = .155 sq. inch
 1 sq. decimeter = 100 sq. centimeters = 15.5 sq. inches
 1 sq. meter (centare) = 100 sq. decimeters = 10.76 sq. feet
 1 sq. dekameter (are) = 100 sq. meters = 1,076.4 sq. feet
 1 sq. hectometer (hectare) = 100 sq. dekameters = 2.47 acres
 1 sq. kilometer = 100 sq. hectometers = .386 sq. mile

Cubic Measure

1 cu. centimeter = 1000 cu. millimeters = .06 cu. inch
 1 cu. decimeter = 1000 cu. centimeters = 61.02 cu. inches
 1 cu. meter = 1000 cu. decimeters = 35.31 feet

Approximate Conversion Factors

<i>To change</i>	<i>To</i>	<i>Multiply by</i>	<i>To change</i>	<i>To</i>	<i>Multiply by</i>
inches	centimeters	2.540	ounce-inches	newton-meters	.007062
feet	meters	.305	centimeters	inches	.394
yards	meters	.914	meters	feet	3.280
miles	kilometers	1.609	meters	yards	1.094
square inches	square centimeters	6.451	kilometers	miles	.621
square feet	square meters	.093	square centimeters	square inches	.155
square yards	square meters	.836	square meters	square feet	10.764
square miles	square kilometers	2.590	square meters	square yards	1.196
acres	square hectometers	.405	square kilometers	square miles	.386
cubic feet	cubic meters	.028	square hectometers	acres	2.471
cubic yards	cubic meters	.765	cubic meters	cubic feet	35.315
fluid ounces	milliliters	29.573	cubic meters	cubic yards	1.308
pints	liters	.473	milliliters	fluid ounces	.034
quarts	liters	.946	liters	pints	2.113
gallons	liters	3.785	liters	quarts	1.057
ounces	grams	28.349	liters	gallons	.264
pounds	kilograms	.454	grams	ounces	.035
short tons	metric tons	.907	kilograms	pounds	2.205
pound-feet	newton-meters	1.356	metric tons	short tons	1.102
pound-inches	newton-meters	.11296			

Temperature (Exact)

_F	Fahrenheit temperature	5/9 (after subtracting 32)	Celsius temperature	_C
----	---------------------------	-------------------------------	------------------------	----

PIN: 080885-000